

For Research Use Only

# METTL7B Polyclonal antibody

Catalog Number: 17001-1-AP

7 Publications



## Basic Information

Catalog Number:

17001-1-AP

Size:

400 µg/ml

Source:

Rabbit

Isotype:

IgG

Immunogen Catalog Number:

AG10694

GenBank Accession Number:

BC020509

GeneID (NCBI):

196410

UNIPROT ID:

Q6UX53

Full Name:

methyltransferase like 7B

Calculated MW:

244aa, 28 kDa

Observed MW:

28 kDa

Purification Method:

Antigen affinity purification

Recommended Dilutions:

WB 1:1000-1:4000

IHC 1:50-1:500

## Applications

Tested Applications:

IHC, WB, ELISA

Cited Applications:

WB, IHC

Species Specificity:

human, mouse, rat

Cited Species:

human, mouse

**Note-IHC: suggested antigen retrieval with TE buffer pH 9.0; (\*) Alternatively, antigen retrieval may be performed with citrate buffer pH 6.0**

Positive Controls:

WB : mouse liver tissue, rat liver tissue

IHC : mouse liver tissue,

## Background Information

### Notable Publications

Author	Pubmed ID	Journal	Application
Jawad Ali	33240979	Ann Transl Med	WB
Xiaochuan Chen	34604305	Front Mol Biosci	IHC
Jian Zhang	36465115	iScience	WB

## Storage

Storage:

Store at -20°C. Stable for one year after shipment.

Storage Buffer:

PBS with 0.02% sodium azide and 50% glycerol pH 7.3.

Aliquoting is unnecessary for -20°C storage

For technical support and original validation data for this product please contact:

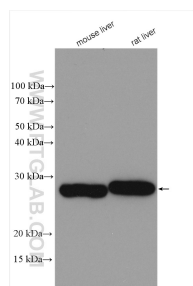
T: 4006900926

E: Proteintech-CN@ptglab.com

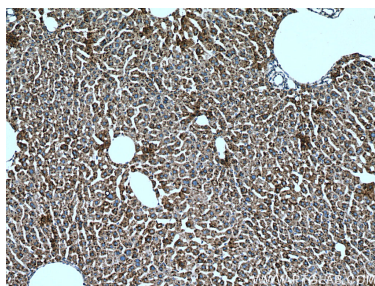
W: ptgcn.com

This product is exclusively available under Proteintech Group brand and is not available to purchase from any other manufacturer.

## Selected Validation Data



Various lysates were subjected to SDS PAGE followed by western blot with 17001-1-AP (METTL7B antibody) at dilution of 1:2500 incubated at room temperature for 1.5 hours.



Immunohistochemical analysis of paraffin-embedded mouse liver tissue slide using 17001-1-AP (METTL7B antibody) at dilution of 1:200 (under 10x lens). Heat mediated antigen retrieval with Tris-EDTA buffer (pH 9.0).