

# MRPL21 Polyclonal antibody

Catalog Number: 16978-1-AP

## Basic Information

**Catalog Number:**

16978-1-AP

**Size:**

400 µg/ml

**Source:**

Rabbit

**Isotype:**

IgG

**Immunogen Catalog Number:**

AG9807

**GenBank Accession Number:**

BC055088

**GeneID (NCBI):**

219927

**UNIPROT ID:**

Q7Z2W9

**Full Name:**

mitochondrial ribosomal protein L21

**Calculated MW:**

209 aa, 23 kDa

**Observed MW:**

23 kDa

**Purification Method:**

Antigen affinity purification

**Recommended Dilutions:**

WB 1:500-1:1000

IHC 1:20-1:200

## Applications

**Tested Applications:**

IHC, WB, ELISA

**Species Specificity:**

human, mouse, rat

**Note-IHC: suggested antigen retrieval with *TE buffer pH 9.0*; (\*) Alternatively, antigen retrieval may be performed with *citrate buffer pH 6.0***

**Positive Controls:**

WB : COLO 320 cells, HCT 116 cells

IHC : human liver tissue,

## Background Information

### Storage

**Storage:**

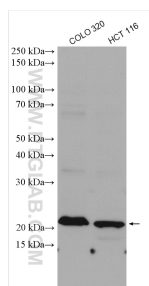
Store at -20°C. Stable for one year after shipment.

**Storage Buffer:**

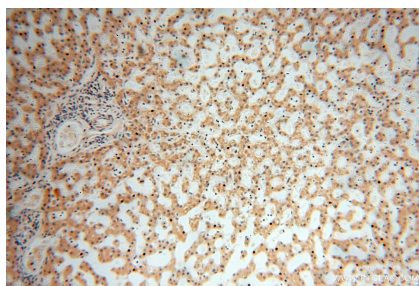
PBS with 0.02% sodium azide and 50% glycerol pH 7.3.

Aliquoting is unnecessary for -20°C storage

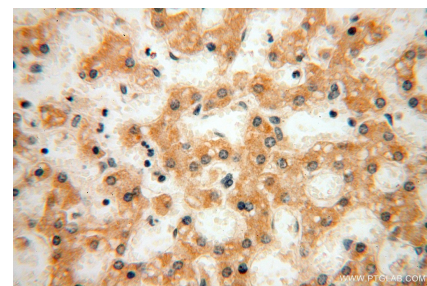
## Selected Validation Data



Various lysates were subjected to SDS PAGE followed by western blot with 16978-1-AP (MRPL21 antibody) at dilution of 1:600 incubated at room temperature for 1.5 hours.



Immunohistochemical analysis of paraffin-embedded human liver using 16978-1-AP (MRPL21 antibody) at dilution of 1:100 (under 10x lens).



Immunohistochemical analysis of paraffin-embedded human liver using 16978-1-AP (MRPL21 antibody) at dilution of 1:100 (under 40x lens).