

For Research Use Only

Syntabulin Polyclonal antibody

Catalog Number: 16972-1-AP

3 Publications



Basic Information

Catalog Number:

16972-1-AP

Size:

800 µg/ml

Source:

Rabbit

Isotype:

IgG

Immunogen Catalog Number:

AG9344

GenBank Accession Number:

BC012082

GeneID (NCBI):

55638

UNIPROT ID:

Q9NX95

Full Name:

Golgi-localized protein

Calculated MW:

662 aa, 72 kDa

Observed MW:

90 kDa

Purification Method:

Antigen affinity purification

Recommended Dilutions:

WB 1:500-1:2000

IF-P 1:50-1:500

IF/ICC 1:50-1:500

Applications

Tested Applications:

WB, IF/ICC, IF-P, ELISA

Cited Applications:

WB, IF

Species Specificity:

human, mouse, rat

Cited Species:

human, mouse, rat

Positive Controls:

WB : HeLa cells, MCF-7 cells

IF-P : rat brain tissue,

IF/ICC : HeLa cells,

Background Information

Notable Publications

Author	Pubmed ID	Journal	Application
Qi Wang	30923004	Neurobiol Dis	WB
Saravanan Gunaseelan	33395696	Hum Mol Genet	WB
Pingyang Ke	37349285	Cell Death Discov	WB,IF

Storage

Storage:

Store at -20°C. Stable for one year after shipment.

Storage Buffer:

PBS with 0.02% sodium azide and 50% glycerol pH 7.3.

Aliquoting is unnecessary for -20°C storage

For technical support and original validation data for this product please contact:

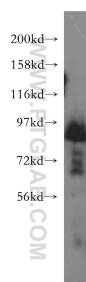
T: 4006900926

E: Proteintech-CN@ptglab.com

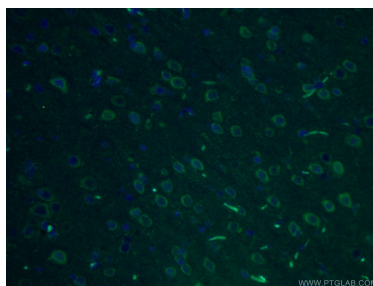
W: ptgcn.com

This product is exclusively available under Proteintech Group brand and is not available to purchase from any other manufacturer.

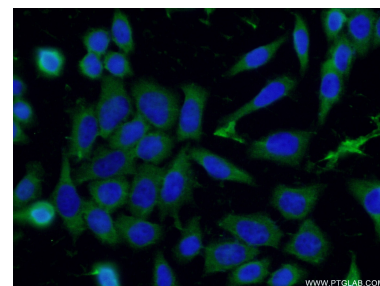
Selected Validation Data



HeLa cells were subjected to SDS PAGE followed by western blot with 16972-1-AP (Syntabulin antibody) at dilution of 1:500 incubated at room temperature for 1.5 hours.



Immunofluorescent analysis of (4% PFA) fixed rat brain tissue using 16972-1-AP (Syntabulin antibody) at dilution of 1:100 and CoraLite488-Conjugated AffiniPure Goat Anti-Rabbit IgG(H+L).



Immunofluorescent analysis of (-20°C Ethanol) fixed HeLa cells using 16972-1-AP (Syntabulin antibody) at dilution of 1:50 and Alexa Fluor 488-conjugated AffiniPure Goat Anti-Rabbit IgG(H+L).