

For Research Use Only

SYF2 Polyclonal antibody

Catalog Number: 16958-1-AP

Featured Product

1 Publications



Basic Information

Catalog Number:

16958-1-AP

Size:

450 µg/ml

Source:

Rabbit

Isotype:

IgG

Immunogen Catalog Number:

AG10656

GenBank Accession Number:

BC010862

GeneID (NCBI):

25949

UNIPROT ID:

O95926

Full Name:

SYF2 homolog, RNA splicing factor (S. cerevisiae)

Calculated MW:

243 aa, 29 kDa

Observed MW:

29 kDa

Purification Method:

Antigen affinity purification

Recommended Dilutions:

WB 1:500-1:1000

IF 1:50-1:500

Applications

Tested Applications:

IF/ICC, WB, ELISA

Cited Applications:

WB, RIP

Species Specificity:

human

Cited Species:

human

Positive Controls:

WB : HEK-293 cells,

IF : HEK-293 cells,

Background Information

Notable Publications

Author	Pubmed ID	Journal	Application
Iris Tanaka	31943118	Nucleic Acids Res	WB, RIP

Storage

Storage:

Store at -20°C. Stable for one year after shipment.

Storage Buffer:

PBS with 0.02% sodium azide and 50% glycerol pH 7.3.

Aliquoting is unnecessary for -20°C storage

For technical support and original validation data for this product please contact:

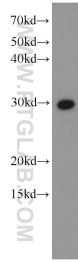
T: 4006900926

E: Proteintech-CN@ptglab.com

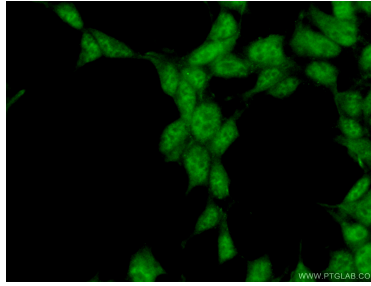
W: ptgcn.com

This product is exclusively available under Proteintech Group brand and is not available to purchase from any other manufacturer.

Selected Validation Data



HEK-293 cells were subjected to SDS PAGE followed by western blot with 16958-1-AP (SYF2 antibody) at dilution of 1:600 incubated at room temperature for 1.5 hours.



Immunofluorescent analysis of (10% Formaldehyde) fixed HEK-293 cells using 16958-1-AP (SYF2 antibody) at dilution of 1:50 and Alexa Fluor 488-conjugated AffiniPure Goat Anti-Rabbit IgG(H+L).