

MTERF Polyclonal antibody

Catalog Number: 16957-1-AP

2 Publications

Basic Information

Catalog Number:

16957-1-AP

Size:

500 µg/ml

Source:

Rabbit

Isotype:

IgG

Immunogen Catalog Number:

AG10640

GenBank Accession Number:

BC000965

GeneID (NCBI):

7978

UNIPROT ID:

Q99551

Full Name:mitochondrial transcription
termination factor**Calculated MW:**

46 kDa

Observed MW:

31 kDa

Purification Method:

Antigen affinity purification

Recommended Dilutions:

WB 1:500-1:2000

Applications

Tested Applications:

WB, ELISA

Cited Applications:

WB

Species Specificity:

human, mouse, rat

Cited Species:

human, mouse

Positive Controls:

WB : HeLa cells, Jurkat cells

Background Information

Mitochondrial transcription termination factor (MTERF) also named as Mterf1 is a 399 amino acid protein, which localizes in the mitochondrion and belongs to the mTERF family. MTERF contains three leucine zippers that form a three-stranded coiled-coil that binds to DNA. It has been suggested that only the phosphorylated form of MTERF has transcription termination activity. MTERF plays a central role in the control of mitochondrial rRNA and mRNA synthesis. MTERFD1 is also thought to act as a mitochondrial transcription regulator and is expressed as two isoforms produced by alternative splicing. Using DNA affinity chromatography, a fraction called MTERF was found to be associated with foot-printing capacity, and this contained two polypeptides of 34 and 31 kDa. Moreover, termination-promoting activity appears to reside in the 34-kDa protein. (PMID:7681833).

Notable Publications

Author	Pubmed ID	Journal	Application
Stanka Matic	29572490	Nat Commun	WB
Jing Geng	26414765	Nat Immunol	WB

Storage

Storage:

Store at -20°C. Stable for one year after shipment.

Storage Buffer:

PBS with 0.02% sodium azide and 50% glycerol pH 7.3.

Aliquoting is unnecessary for -20°C storage

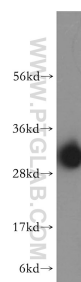
For technical support and original validation data for this product please contact:

T: 4006900926

E: Proteintech-CN@ptglab.comW: ptgcn.com

This product is exclusively available under Proteintech Group brand and is not available to purchase from any other manufacturer.

Selected Validation Data



HeLa cells were subjected to SDS PAGE followed by western blot with 16957-1-AP (MTERF antibody) at dilution of 1:400 incubated at room temperature for 1.5 hours.