

For Research Use Only

# KLHL21 Polyclonal antibody

Catalog Number: 16952-1-AP

Featured Product

1 Publications



## Basic Information

### Catalog Number:

16952-1-AP

### Size:

450 µg/ml

### Source:

Rabbit

### Isotype:

IgG

### Immunogen Catalog Number:

AG10582

### GenBank Accession Number:

BC034039

### GeneID (NCBI):

9903

### UNIPROT ID:

Q9UJP4

### Full Name:

kelch-like 21 (Drosophila)

### Calculated MW:

597 aa, 67 kDa

### Observed MW:

67 kDa

### Purification Method:

Antigen affinity purification

### Recommended Dilutions:

WB 1:500-1:1000

IP 0.5-4.0 µg for 1.0-3.0 mg of total protein lysate

IHC 1:20-1:200

## Applications

### Tested Applications:

IHC, IP, WB, ELISA

### Cited Applications:

WB, CoIP

### Species Specificity:

human, mouse, rat

### Cited Species:

human

**Note-IHC: suggested antigen retrieval with TE buffer pH 9.0; (\*) Alternatively, antigen retrieval may be performed with citrate buffer pH 6.0**

### Positive Controls:

WB : A431 cells, HeLa cells

IP : HeLa cells,

IHC : human brain tissue, human liver cancer tissue

## Background Information

## Notable Publications

Author	Pubmed ID	Journal	Application
Changchun Li	35084622	Breast Cancer Res Treat	WB, CoIP

## Storage

### Storage:

Store at -20°C. Stable for one year after shipment.

### Storage Buffer:

PBS with 0.02% sodium azide and 50% glycerol pH 7.3.

Aliquoting is unnecessary for -20°C storage

For technical support and original validation data for this product please contact:

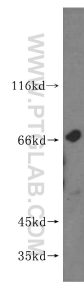
T: 4006900926

E: Proteintech-CN@ptglab.com

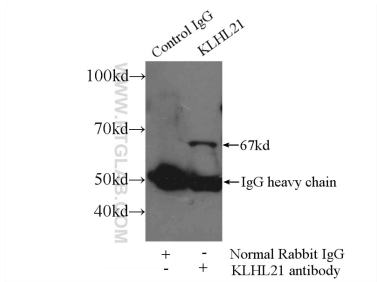
W: ptgcn.com

This product is exclusively available under Proteintech Group brand and is not available to purchase from any other manufacturer.

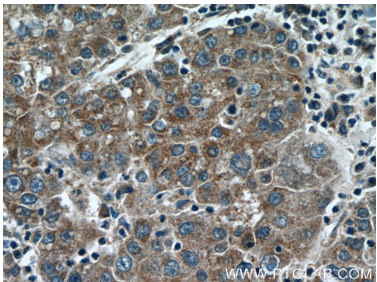
Selected Validation Data



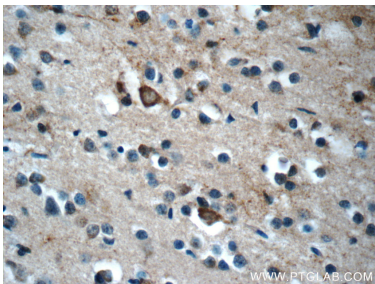
A431 cells were subjected to SDS PAGE followed by western blot with 16952-1-AP (KLHL21 antibody) at dilution of 1:400 incubated at room temperature for 1.5 hours.



IP result of anti-KLHL21 (IP:16952-1-AP, 3ug; Detection:16952-1-AP 1:300) with HeLa cells lysate 1800ug.



Immunohistochemical analysis of paraffin-embedded human liver cancer tissue slide using 16952-1-AP (KLHL21 Antibody) at dilution of 1:50 (under 40x lens).



Immunohistochemical analysis of paraffin-embedded human brain tissue slide using 16952-1-AP (KLHL21 Antibody) at dilution of 1:50 (under 40x lens).