

For Research Use Only

# KLHL3 Polyclonal antibody

Catalog Number: 16951-1-AP

Featured Product

17 Publications



## Basic Information

### Catalog Number:

16951-1-AP

### Concentration:

900 ug/ml

### Source:

Rabbit

### Isotype:

IgG

### Immunogen Catalog Number:

AG10580

### GenBank Accession Number:

BC034035

### GeneID (NCBI):

26249

### UNIPROT ID:

Q9UH77

### Full Name:

kelch-like 3 (Drosophila)

### Calculated MW:

65 kDa

### Observed MW:

65 kDa

### Purification Method:

Antigen affinity purification

### Recommended Dilutions:

WB 1:500-1:1000

IP 0.5-4.0 ug for 1.0-3.0 mg of total protein lysate

IHC 1:500-1:2000

## Applications

### Tested Applications:

WB, IHC, IP, ELISA

### Cited Applications:

WB, IHC, IF, IP

### Species Specificity:

human, mouse, rat

### Cited Species:

human, mouse

**Note-IHC: suggested antigen retrieval with TE buffer pH 9.0; (\*) Alternatively, antigen retrieval may be performed with citrate buffer pH 6.0**

### Positive Controls:

**WB :** HepG2 cells, mouse liver tissue, Jurkat cells, rat liver tissue, human liver tissue, mouse thymus tissue, HL-60 cells, mouse pancreas tissue

**IP :** HepG2 cells,

**IHC :** human tonsillitis tissue, human liver tissue

## Background Information

## Notable Publications

Author	Pubmed ID	Journal	Application
Yutaro Mori	26349538	Biochem J	WB
Ryan J Cornelius	30301860	J Am Soc Nephrol	WB
Yuki Yoshizaki	26435498	Biochem Biophys Res Commun	WB

## Storage

### Storage:

Store at -20°C. Stable for one year after shipment.

### Storage Buffer:

PBS with 0.02% sodium azide and 50% glycerol pH 7.3.

Aliquoting is unnecessary for -20°C storage

For technical support and original validation data for this product please contact:

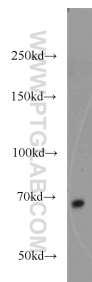
T: 4006900926

E: [Proteintech-CN@ptglab.com](mailto:Proteintech-CN@ptglab.com)

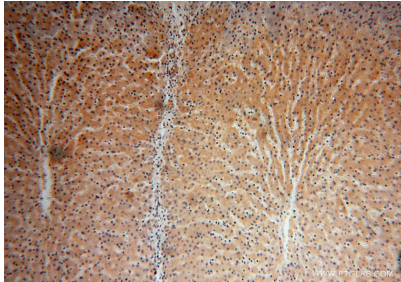
W: [ptgcn.com](http://ptgcn.com)

**This product is exclusively available under Proteintech Group brand and is not available to purchase from any other manufacturer.**

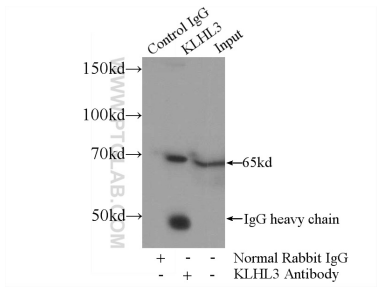
Selected Validation Data



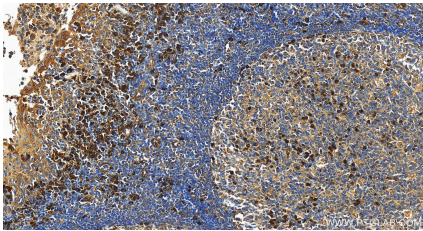
HepG2 cells were subjected to SDS PAGE followed by western blot with 16951-1-AP (KLHL3 antibody) at dilution of 1:800 incubated at room temperature for 1.5 hours.



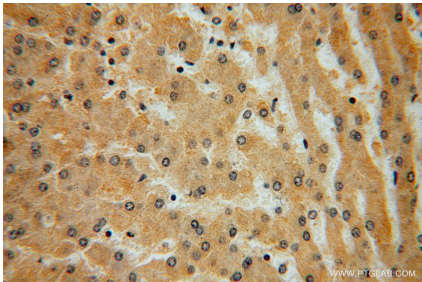
Immunohistochemical analysis of paraffin-embedded human liver using 16951-1-AP (KLHL3 antibody) at dilution of 1:100 (under 10x lens).



IP result of anti-KLHL3 (IP:16951-1-AP, 4ug; Detection:16951-1-AP 1:700) with HepG2 cells lysate 2800ug.



Immunohistochemical analysis of paraffin-embedded human tonsillitis tissue slide using 16951-1-AP (KLHL3 antibody) at dilution of 1:1000 (under 20x lens). Heat mediated antigen retrieval with Tris-EDTA buffer (pH 9.0).



Immunohistochemical analysis of paraffin-embedded human liver using 16951-1-AP (KLHL3 antibody) at dilution of 1:100 (under 40x lens).