

For Research Use Only

# CPLX3 Polyclonal antibody, PBS Only

Catalog Number: 16949-1-PBS



## Basic Information

Catalog Number:

16949-1-PBS

Source:

Rabbit

Isotype:

IgG

Immunogen Catalog Number:

AG10571

GenBank Accession Number:

BC018026

GeneID (NCBI):

594855

UNIPROT ID:

Q8WVH0

Full Name:

complexin 3

Calculated MW:

158 aa, 18 kDa

Observed MW:

20-23 kDa

Purification Method:

Antigen affinity purification

## Applications

Tested Applications:

WB, IF-P, IP, Indirect ELISA

Species Specificity:

human, mouse, rat

## Background Information

CPLX3, also named as Complexin-3, is 158 amino acid protein, which belongs to the complexin/synaphin family. CPLX3 localizes in the membrane and binds to the SNARE core complex containing SNAP25, VAMP2 and STX1A. CPLX3 positively regulates a late step in synaptic vesicle exocytosis.

## Storage

Storage:

Store at -80°C.

**The product is shipped with ice packs. Upon receipt, store it immediately at -80°C**

Storage Buffer:

PBS only, pH7.3

For technical support and original validation data for this product please contact:

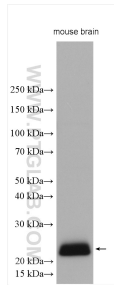
T: 4006900926

E: [Proteintech-CN@ptglab.com](mailto:Proteintech-CN@ptglab.com)

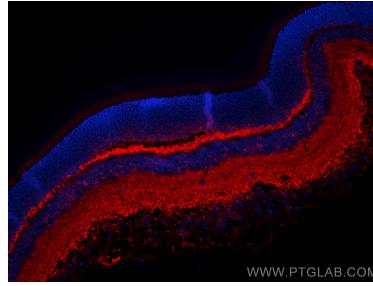
W: [ptgcn.com](http://ptgcn.com)

**This product is exclusively available under Proteintech Group brand and is not available to purchase from any other manufacturer.**

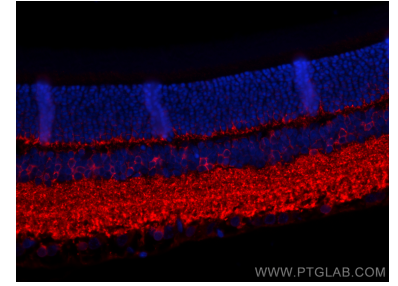
## Selected Validation Data



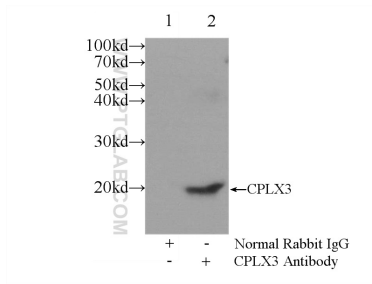
mouse brain tissue were subjected to SDS PAGE followed by western blot with 16949-1-AP (CPLX3 antibody) at dilution of 1:2000 incubated at room temperature for 1.5 hours. This data was developed using the same antibody clone with 16949-1-PBS in a different storage buffer formulation.



Immunofluorescent analysis of (-20°C Acetone) fixed paraffin-embedded rat eye tissue using CPLX3 antibody (16949-1-AP) at dilution of 1:200 and CoraLite®594-Conjugated Goat Anti-Rabbit IgG(H+L) (SA00013-4). Heat mediated antigen retrieval with Tris-EDTA buffer (pH 9.0). This data was developed using the same antibody clone with 16949-1-PBS in a different storage buffer formulation.



Immunofluorescent analysis of (-20°C Acetone) fixed paraffin-embedded rat eye tissue using CPLX3 antibody (16949-1-AP) at dilution of 1:200 and CoraLite®594-Conjugated Goat Anti-Rabbit IgG(H+L) (SA00013-4). Heat mediated antigen retrieval with Tris-EDTA buffer (pH 9.0). This data was developed using the same antibody clone with 16949-1-PBS in a different storage buffer formulation.



IP result of anti-CPLX3 (IP:16949-1-AP, 3ug; Detection:16949-1-AP 1:300) with mouse brain tissue lysate 6000ug. This data was developed using the same antibody clone with 16949-1-PBS in a different storage buffer formulation.