

## CPLX3 Polyclonal antibody

Catalog Number: 16949-1-AP

2 Publications

## Basic Information

## Catalog Number:

16949-1-AP

## Size:

800 µg/ml

## Source:

Rabbit

## Isotype:

IgG

## Immunogen Catalog Number:

AG10571

## GenBank Accession Number:

BC018026

## GeneID (NCBI):

594855

## UNIPROT ID:

Q8WVH0

## Full Name:

complexin 3

## Calculated MW:

158 aa, 18 kDa

## Observed MW:

20-23 kDa

## Purification Method:

Antigen affinity purification

## Recommended Dilutions:

WB 1:1000-1:4000

IP 0.5-4.0 µg for 1.0-3.0 mg of total protein lysate

## Applications

## Tested Applications:

IP, WB, ELISA

## Cited Applications:

WB, IHC

## Species Specificity:

human, mouse, rat

## Cited Species:

mouse

## Positive Controls:

WB : mouse brain tissue, human brain tissue

IP : mouse brain tissue,

## Background Information

CPLX3, also named as Complexin-3, is 158 amino acid protein, which belongs to the complexin/synaphin family. CPLX3 localizes in the membrane and binds to the SNARE core complex containing SNAP25, VAMP2 and STX1A. CPLX3 positively regulates a late step in synaptic vesicle exocytosis.

## Notable Publications

Author	Pubmed ID	Journal	Application
María Pedraza	24778253	Proc Natl Acad Sci U S A	IHC
Wang Ziying Z	23982049	Free Radic Biol Med	WB

## Storage

## Storage:

Store at -20°C. Stable for one year after shipment.

## Storage Buffer:

PBS with 0.02% sodium azide and 50% glycerol pH 7.3.

Aliquoting is unnecessary for -20°C storage

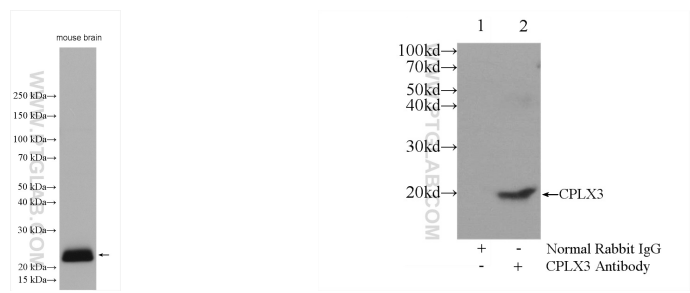
For technical support and original validation data for this product please contact:

T: 4006900926

E: [Proteintech-CN@ptglab.com](mailto:Proteintech-CN@ptglab.com)W: [ptgcn.com](http://ptgcn.com)

This product is exclusively available under Proteintech Group brand and is not available to purchase from any other manufacturer.

Selected Validation Data



mouse brain tissue were subjected to SDS PAGE followed by western blot with 16949-1-AP (CPLX3 antibody) at dilution of 1:2000 incubated at room temperature for 1.5 hours.

IP result of anti-CPLX3 (IP:16949-1-AP, 3ug; Detection:16949-1-AP 1:300) with mouse brain tissue lysate 6000ug.