

# GAPVD1 Polyclonal antibody

Catalog Number: 16940-1-AP

## Basic Information

**Catalog Number:**

16940-1-AP

**Size:**

300 ug/ml

**Source:**

Rabbit

**Isotype:**

IgG

**Immunogen Catalog Number:**

AG10492

**GenBank Accession Number:**

BC021119

**GeneID (NCBI):**

26130

**UNIPROT ID:**

Q14C86

**Full Name:**

GTPase activating protein and VPS9 domains 1

**Calculated MW:**

1478 aa, 165 kDa

**Observed MW:**

180-200 kDa

**Purification Method:**

Antigen affinity purification

**Recommended Dilutions:**

WB 1:500-1:1000

IHC 1:250-1:1000

IF/ICC 1:200-1:800

## Applications

**Tested Applications:**

WB, IHC, IF/ICC, ELISA

**Species Specificity:**

human, mouse, rat

**Note-IHC: suggested antigen retrieval with TE buffer pH 9.0; (\*) Alternatively, antigen retrieval may be performed with citrate buffer pH 6.0**

**Positive Controls:**

WB : mouse heart tissue, rat heart tissue

IHC : human placenta tissue,

IF/ICC : A431 cells,

## Background Information

GTPase activating protein and VPS9 domains 1(GAPVD1) is a multifunctional protein involved in cellular processes such as endocytosis, insulin receptor internalization, and GLUT4 trafficking. Its function is critical in maintaining cellular homeostasis and it interacts with various proteins, including those involved in endocytosis and circadian rhythm regulation.

## Storage

**Storage:**

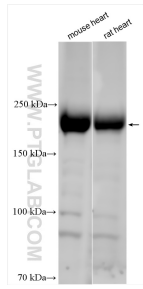
Store at -20°C. Stable for one year after shipment.

**Storage Buffer:**

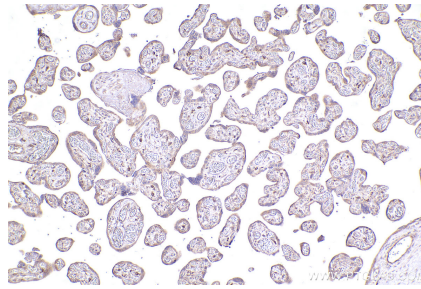
PBS with 0.02% sodium azide and 50% glycerol pH 7.3.

Aliquoting is unnecessary for -20°C storage

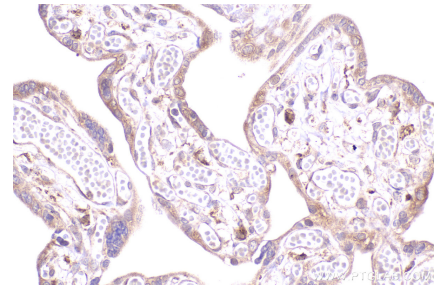
## Selected Validation Data



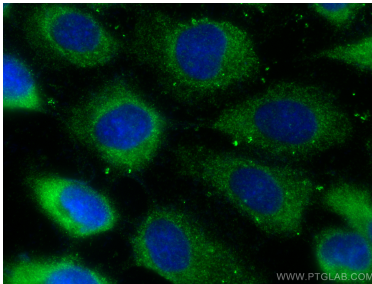
Various lysates were subjected to SDS PAGE followed by western blot with 16940-1-AP (GAPVD1 antibody) at dilution of 1:500 incubated at room temperature for 1.5 hours.



Immunohistochemical analysis of paraffin-embedded human placenta tissue slide using 16940-1-AP (GAPVD1 antibody) at dilution of 1:500 (under 10x lens). Heat mediated antigen retrieval with Tris-EDTA buffer (pH 9.0).



Immunohistochemical analysis of paraffin-embedded human placenta tissue slide using 16940-1-AP (GAPVD1 antibody) at dilution of 1:500 (under 40x lens). Heat mediated antigen retrieval with Tris-EDTA buffer (pH 9.0).



Immunofluorescent analysis of (-20°C Methanol) fixed A431 cells using GAPVD1 antibody (16940-1-AP) at dilution of 1:400 and CoraLite®488-Conjugated AffiniPure Goat Anti-Rabbit IgG(H+L) (SA00013-2).