

For Research Use Only

SPATS2L Polyclonal antibody

Catalog Number: 16938-1-AP

Featured Product

4 Publications



Basic Information

Catalog Number:

16938-1-AP

Size:

700 µg/ml

Source:

Rabbit

Isotype:

IgG

Immunogen Catalog Number:

AG10438

GenBank Accession Number:

BC018736

GeneID (NCBI):

26010

UNIPROT ID:

Q9NUQ6

Full Name:

viral DNA polymerase-transactivated protein 6

Calculated MW:

488 aa, 54 kDa

Observed MW:

54-62 kDa

Purification Method:

Antigen affinity purification

Recommended Dilutions:

WB 1:500-1:3000

IHC 1:20-1:200

IF 1:10-1:100

Applications

Tested Applications:

IF/ICC, IHC, WB, ELISA

Cited Applications:

WB, IF, IHC

Species Specificity:

human, mouse

Cited Species:

human, mouse

Note-IHC: suggested antigen retrieval with TE buffer pH 9.0; (*) Alternatively, antigen retrieval may be performed with citrate buffer pH 6.0

Positive Controls:

WB: HepG2 cells, mouse kidney tissue

IHC: human kidney tissue, human heart tissue, human liver tissue, human lung tissue, human ovary tissue, human placenta tissue, human skin tissue, human spleen tissue, human testis tissue

IF: HepG2 cells,

Background Information

SPATS2L encodes spermatogenesis associated and serine-rich 2-like protein, also named DNAPT6 (DNA polymerase transactivated protein 6) in human (PMID:11230166). SPATS2L acts as an important regulator of β 2-adrenergic receptor down-regulation (PubMed: 25562107). MiR-1269a down-regulates the expression of SPATS2L and LRP6, thereby inhibiting the proliferation of liver cancer cells (PMID: 28081866, PMID:35252180). SPATS2L has several isoforms by alternative splicing.

Notable Publications

Author	Pubmed ID	Journal	Application
Yosuke Matsumoto	35896560	Sci Rep	IHC,WB
Zewei Tu	33634092	Front Cell Dev Biol	WB
Sefan Asamitsu	36827365	Sci Adv	IF

Storage

Storage:

Store at -20°C. Stable for one year after shipment.

Storage Buffer:

PBS with 0.02% sodium azide and 50% glycerol pH 7.3.

Aliquoting is unnecessary for -20°C storage

For technical support and original validation data for this product please contact:

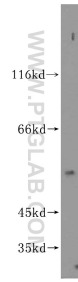
T: 4006900926

E: Proteintech-CN@ptglab.com

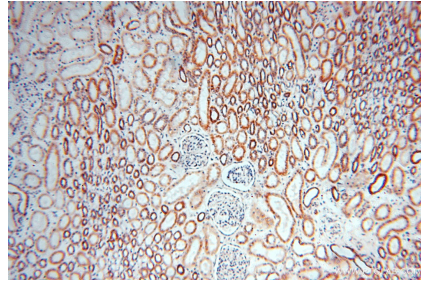
W: ptgcn.com

This product is exclusively available under Proteintech Group brand and is not available to purchase from any other manufacturer.

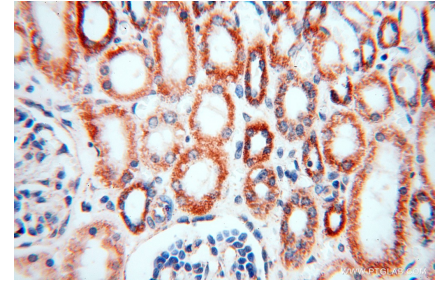
Selected Validation Data



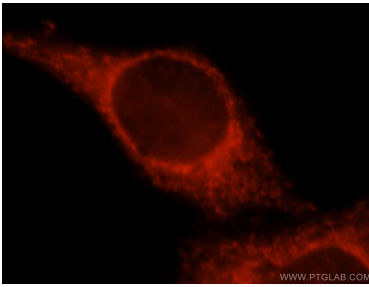
HepG2 cells were subjected to SDS PAGE followed by western blot with 16938-1-AP (SPATS2L antibody) at dilution of 1:600 incubated at room temperature for 1.5 hours.



Immunohistochemical analysis of paraffin-embedded human kidney using 16938-1-AP (SPATS2L antibody) at dilution of 1:100 (under 10x lens).



Immunohistochemical analysis of paraffin-embedded human kidney using 16938-1-AP (SPATS2L antibody) at dilution of 1:100 (under 40x lens).



Immunofluorescent analysis of HepG2 cells, using LOC26010 antibody 16938-1-AP at 1:25 dilution and Rhodamine-labeled goat anti-rabbit IgG (red).