

For Research Use Only

Calcyphosine Polyclonal antibody

Catalog Number: 16926-1-AP



Basic Information

Catalog Number: 16926-1-AP	GenBank Accession Number: BC080599	Purification Method: Antigen affinity purification
Size: 850 µg/ml	GeneID (NCBI): 828	Recommended Dilutions: WB 1:1000-1:8000 IHC 1:50-1:500
Source: Rabbit	UNIPROT ID: Q13938	
Isotype: IgG	Full Name: calcyphosine	
Immunogen Catalog Number: AG10330	Calculated MW: 189 aa, 21 kDa	
	Observed MW: 21 kDa	

Applications

Tested Applications:

IHC, WB, ELISA

Species Specificity:

human

Note-IHC: suggested antigen retrieval with TE buffer pH 9.0; (*) Alternatively, antigen retrieval may be performed with citrate buffer pH 6.0

Positive Controls:

WB : human placenta tissue, human spleen tissue, human colon tissue

IHC : human oesophagus cancer tissue,

Background Information

calcyphosine is a calcium-binding protein, which may play a role in the regulation of ion transport. Calcyphosine (CAPS) was initially identified in the canine thyroid but has also been detected in humans and other mammals. CAPS synthesis is increased by thyroid - stimulating hormone and cAMP analogs that promote cell proliferation and maintain cell differentiation. Recently, CAPS was found to be involved in many kinds of tumor.

Storage

Storage:

Store at -20°C. Stable for one year after shipment.

Storage Buffer:

PBS with 0.02% sodium azide and 50% glycerol pH 7.3.

Aliquoting is unnecessary for -20°C storage

For technical support and original validation data for this product please contact:

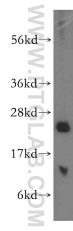
T: 4006900926

E: Proteintech-CN@ptglab.com

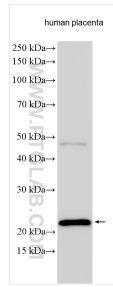
W: ptgcn.com

This product is exclusively available under Proteintech Group brand and is not available to purchase from any other manufacturer.

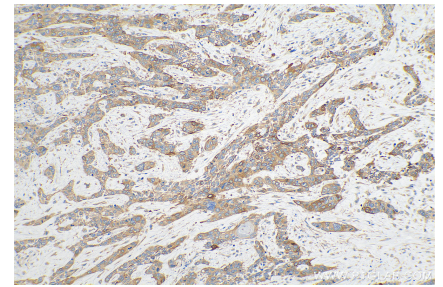
Selected Validation Data



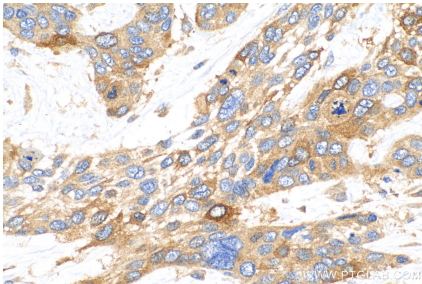
human spleen tissue were subjected to SDS PAGE followed by western blot with 16926-1-AP (Calcyphosine antibody) at dilution of 1:500 incubated at room temperature for 1.5 hours.



Human placenta tissue were subjected to SDS PAGE followed by western blot with 16926-1-AP (Calcyphosine antibody) at dilution of 1:4000 incubated at room temperature for 1.5 hours.



Immunohistochemical analysis of paraffin-embedded human placenta tissue slide using 16926-1-AP (Calcyphosine antibody) at dilution of 1:200 (under 10x lens). Heat mediated antigen retrieval with Tris-EDTA buffer (pH 9.0).



Immunohistochemical analysis of paraffin-embedded human oesophagus cancer tissue slide using 16926-1-AP (Calcyphosine antibody) at dilution of 1:200 (under 40x lens). Heat mediated antigen retrieval with Tris-EDTA buffer (pH 9.0).