

For Research Use Only

ATG4D Polyclonal antibody

Catalog Number: 16924-1-AP

Featured Product

6 Publications



Basic Information

Catalog Number:

16924-1-AP

Concentration:

400 ug/ml

Source:

Rabbit

Isotype:

IgG

Immunogen Catalog Number:

AG10307

GenBank Accession Number:

BC068992

GeneID (NCBI):

84971

UNIPROT ID:

Q86TLO

Full Name:

ATG4 autophagy related 4 homolog D
(S. cerevisiae)

Calculated MW:

474 aa, 53 kDa

Observed MW:

53 kDa

Purification Method:

Antigen affinity purification

Recommended Dilutions:

WB 1:500-1:1000

IF/ICC 1:200-1:800

Applications

Tested Applications:

WB, IF/ICC, ELISA

Cited Applications:

WB

Species Specificity:

human, mouse, rat

Cited Species:

human, mouse

Positive Controls:

WB : human brain tissue,

IF/ICC : HEK-293 cells,

Background Information

ATG4D, a member of autophagy-related protein 4 (ATG4) family, plays an interplay role between autophagy and apoptosis in cancers. There are two Atg4 family members-Atg4C and Atg4D-contain cryptic mitochondrial targeting sequences immediately downstream of their canonical(DEVD) caspase cleavage sites. Consequently, caspase-cleaved Atg4D (DN63 Atg4D) localizes to the mitochondrial matrix when expressed in mammalian cells, where it undergoes further processing to a ~42 kDa mitochondrial form.

Notable Publications

Author	Pubmed ID	Journal	Application
Rachel Ulferts	34706226	Cell Rep	WB
Alexander Agrotis	30661429	Autophagy	WB
Changhong Liu	32069702	Mol Ther Nucleic Acids	WB

Storage

Storage:

Store at -20°C. Stable for one year after shipment.

Storage Buffer:

PBS with 0.02% sodium azide and 50% glycerol

Aliquoting is unnecessary for -20°C storage

For technical support and original validation data for this product please contact:

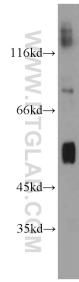
T: 4006900926

E: Proteintech-CN@ptglab.com

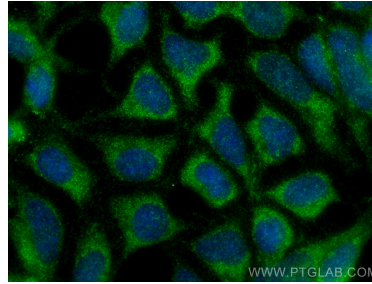
W: ptgcn.com

This product is exclusively available under Proteintech Group brand and is not available to purchase from any other manufacturer.

Selected Validation Data



human brain tissue were subjected to SDS PAGE followed by western blot with 16924-1-AP (ATG4D antibody) at dilution of 1:800 incubated at room temperature for 1.5 hours.



Immunofluorescent analysis of (-20°C Ethanol) fixed HEK-293 cells using ATG4D antibody (16924-1-AP) at dilution of 1:400 and CoraLite®488-Conjugated Goat Anti-Rabbit IgG(H+L) (SA00013-2).