

For Research Use Only

SEC11C Polyclonal antibody, PBS Only

Catalog Number:16901-1-PBS



Basic Information

Catalog Number: 16901-1-PBS	GenBank Accession Number: BC009703	Purification Method: Antigen affinity purification
Concentration: 1 mg/ml	GeneID (NCBI): 90701	
Source: Rabbit	UNIPROT ID: Q9BY50	
Isotype: IgG	Full Name: SEC11 homolog C (S. cerevisiae)	
Immunogen Catalog Number: AG10442	Calculated MW: 192 aa, 22 kDa	
	Observed MW: 16-22 kDa	

Applications

Tested Applications:
WB, Indirect ELISA

Species Specificity:
human, mouse, rat

Background Information

SEC11C (Signal peptidase complex catalytic subunit SEC11C), also known as SPC21. It is located in the Endoplasmic reticulum membrane. Catalytic component of the signal peptidase complex (SPC) which catalyzes the cleavage of N-terminal signal sequences from nascent proteins as they are translocated into the lumen of the endoplasmic reticulum 1. Specifically cleaves N-terminal signal peptides that contain a hydrophobic alpha-helix (h-region) shorter than 18-20 amino acids. The molecular weight of SEC11C is 22 kDa. It has been reported that its molecular weight is 16kDa (PMID: 38183983).

Storage

Storage:
Store at -80°C.
The product is shipped with ice packs. Upon receipt, store it immediately at -80°C

Storage Buffer:
PBS only, pH7.3

For technical support and original validation data for this product please contact:

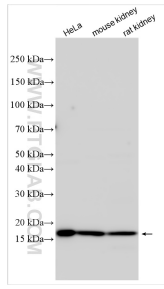
T: 4006900926

E: Proteintech-CN@ptglab.com

W: ptgcn.com

This product is exclusively available under Proteintech Group brand and is not available to purchase from any other manufacturer.

Selected Validation Data



Various lysates were subjected to SDS PAGE followed by western blot with 16901-1-AP (SEC11C antibody) at dilution of 1:3000 incubated at room temperature for 1.5 hours. This data was developed using the same antibody clone with 16901-1-PBS in a different storage buffer formulation.