

# LPL Polyclonal antibody

Catalog Number: 16899-1-AP

3 Publications

## Basic Information

## Catalog Number:

16899-1-AP

## Size:

130 µg/ml

## Source:

Rabbit

## Isotype:

IgG

## Immunogen Catalog Number:

AG10431

## GenBank Accession Number:

BC011353

## GeneID (NCBI):

4023

## UNIPROT ID:

P06858

## Full Name:

lipoprotein lipase

## Calculated MW:

475 aa, 53 kDa

## Observed MW:

53 kDa

## Purification Method:

Antigen affinity purification

## Recommended Dilutions:

WB 1:200-1:1000

## Applications

## Tested Applications:

WB, ELISA

## Cited Applications:

WB

## Species Specificity:

human, mouse, rat

## Cited Species:

mouse

## Positive Controls:

WB : MCF-7 cells, HeLa cells, mouse skeletal muscle tissue

## Background Information

LPL (lipoprotein lipase) is also named as LIPD and belongs to the AB hydrolase superfamily. LPL catalyses the hydrolysis of the triacylglycerol component of circulating chylomicrons and very low density lipoproteins. It plays a role in the binding of lipoprotein particles to cell-surface molecules, including sulfated glycosaminoglycans (GAGs) (PMID:21177248). The gene encodes a protein of 475 amino acids that becomes a mature protein of 448 residues after cleavage of a signal peptide. This protein is highly glycosylated and functions as a head-to-tail dimer under well-defined conditions (PMID:11154699).

## Notable Publications

Author	Pubmed ID	Journal	Application
Xinyu Yang	33980689	Diabetes	
Qiaoli Chen	28696211	Diabetes	WB
Gopal Lamichhane	39056667	Biology (Basel)	WB

## Storage

## Storage:

Store at -20°C. Stable for one year after shipment.

## Storage Buffer:

PBS with 0.02% sodium azide and 50% glycerol pH 7.3.

Aliquoting is unnecessary for -20°C storage

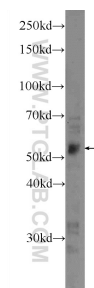
For technical support and original validation data for this product please contact:

T: 4006900926

E: [Proteintech-CN@ptglab.com](mailto:Proteintech-CN@ptglab.com)W: [ptgcn.com](http://ptgcn.com)

This product is exclusively available under Proteintech Group brand and is not available to purchase from any other manufacturer.

## Selected Validation Data



MCF-7 cells were subjected to SDS PAGE followed by western blot with 16899-1-AP (LPL Antibody) at dilution of 1:300 incubated at room temperature for 1.5 hours.