

For Research Use Only

HMGCL Polyclonal antibody

Catalog Number: 16898-1-AP

8 Publications



Basic Information

Catalog Number:

16898-1-AP

Size:

700 µg/ml

Source:

Rabbit

Isotype:

IgG

Immunogen Catalog Number:

AG10426

GenBank Accession Number:

BC010570

GeneID (NCBI):

3155

UNIPROT ID:

P35914

Full Name:

3-hydroxymethyl-3-methylglutaryl-Coenzyme A lyase

Calculated MW:

325 aa, 34 kDa

Observed MW:

34 kDa

Purification Method:

Antigen affinity purification

Recommended Dilutions:

WB 1:1000-1:6000

IP 0.5-4.0 µg for 1.0-3.0 mg of total protein lysate

IHC 1:20-1:200

Applications

Tested Applications:

WB, IP, IHC, ELISA

Cited Applications:

WB, IHC, IP

Species Specificity:

human, mouse, rat

Cited Species:

human, mouse

Note-IHC: suggested antigen retrieval with TE buffer pH 9.0; (*) Alternatively, antigen retrieval may be performed with citrate buffer pH 6.0

Positive Controls:

WB: mouse liver tissue, mouse brain tissue, human heart tissue, rat liver tissue

IP: mouse spleen tissue,

IHC: human liver tissue, human ovary tissue, human spleen tissue, human testis tissue

Background Information

Notable Publications

Author	Pubmed ID	Journal	Application
De Huang	27644987	Cell Res	WB
Jin-Tao Li	32029896	Nat Cell Biol	IHC
Xiaohan Cui	36508088	Hepatol Int	WB, IHC

Storage

Storage:

Store at -20°C. Stable for one year after shipment.

Storage Buffer:

PBS with 0.02% sodium azide and 50% glycerol pH 7.3.

Aliquoting is unnecessary for -20°C storage

For technical support and original validation data for this product please contact:

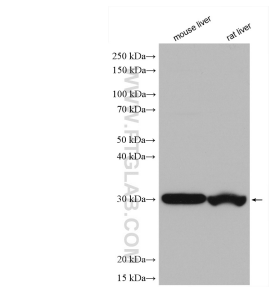
T: 4006900926

E: Proteintech-CN@ptglab.com

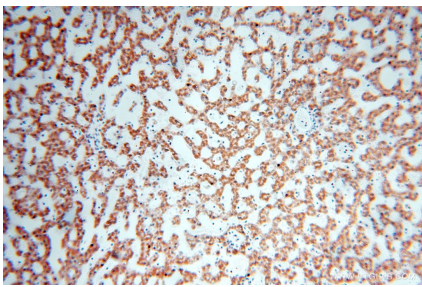
W: ptgcn.com

This product is exclusively available under Proteintech Group brand and is not available to purchase from any other manufacturer.

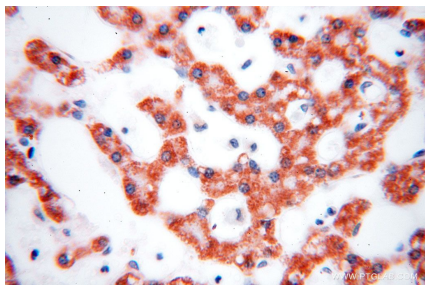
Selected Validation Data



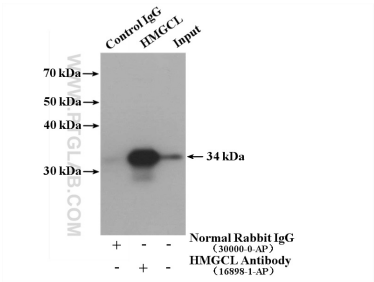
Various lysates were subjected to SDS PAGE followed by western blot with 16898-1-AP (HMGCL antibody) at dilution of 1:3000 incubated at room temperature for 1.5 hours.



Immunohistochemical analysis of paraffin-embedded human liver using 16898-1-AP (HMGCL antibody) at dilution of 1:100 (under 10x lens).



Immunohistochemical analysis of paraffin-embedded human liver using 16898-1-AP (HMGCL antibody) at dilution of 1:100 (under 40x lens).



IP result of anti-HMGCL (IP:16898-1-AP, 4ug; Detection:16898-1-AP 1:500) with mouse spleen tissue lysate 4000 ug.