

For Research Use Only

RPGR Polyclonal antibody

Catalog Number: 16891-1-AP **2 Publications**



Basic Information

Catalog Number: 16891-1-AP	GenBank Accession Number: BC031624	Purification Method: Antigen affinity purification
Size: 300 µg/ml	GeneID (NCBI): 6103	Recommended Dilutions: WB 1:500-1:1000 IHC 1:50-1:500 IF 1:10-1:100
Source: Rabbit	UNIPROT ID: Q92834	
Isotype: IgG	Full Name: retinitis pigmentosa GTPase regulator	
Immunogen Catalog Number: AG10405	Calculated MW: 113 kDa	
	Observed MW: 100-105 kDa, 70 kDa	

Applications

Tested Applications: IF, IHC, WB, ELISA	Positive Controls: WB : mouse eye tissue, mouse liver tissue, Y79 cells, SH-SY5Y cells, mouse retina tissue IHC : mouse eye tissue, human heart tissue, human kidney tissue IF : hTERT-RPE1 cells,
Cited Applications: WB	
Species Specificity: human, mouse	
Cited Species: human	
Note-IHC: suggested antigen retrieval with TE buffer pH 9.0; (*) Alternatively, antigen retrieval may be performed with citrate buffer pH 6.0	

Background Information

RPGR is a protein with a series of six RCC1-like domains (RLDs), characteristic of the highly conserved guanine nucleotide exchange factors. The encoded protein is found in the Golgi body and interacts with RPGRIP1. This protein localizes to the outer segment of rod photoreceptors and is essential for their viability. Mutations in this gene have been associated with X-linked retinitis pigmentosa (XLRP). Multiple alternatively spliced transcript variants that encode different isoforms of this gene have been reported, but the full-length nature of only some have been determined. This antibody can recognize all the isoforms of RPGR.

Notable Publications

Author	Pubmed ID	Journal	Application
Dario Cilleros-Rodriguez	36063381	Elife	WB
Fidelle Chahine Karam	35330501	J Pers Med	WB

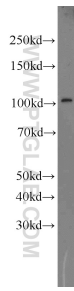
Storage

Storage:
Store at -20°C. Stable for one year after shipment.
Storage Buffer:
PBS with 0.02% sodium azide and 50% glycerol pH 7.3.
Aliquoting is unnecessary for -20°C storage

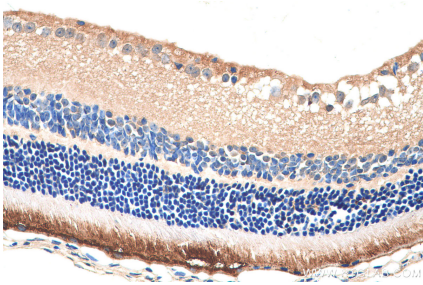
For technical support and original validation data for this product please contact:
T: 4006900926 E: Proteintech-CN@ptglab.com W: ptgcn.com

This product is exclusively available under Proteintech Group brand and is not available to purchase from any other manufacturer.

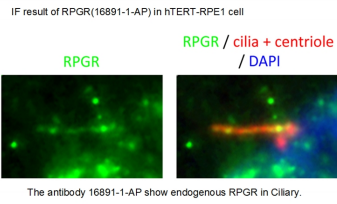
Selected Validation Data



mouse eye tissue were subjected to SDS PAGE followed by western blot with 16891-1-AP (RPGR antibody) at dilution of 1:500 incubated at room temperature for 1.5 hours.

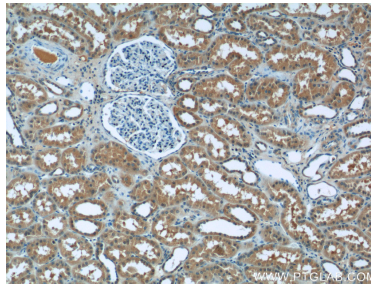


Immunohistochemical analysis of paraffin-embedded mouse eye tissue slide using 16891-1-AP (RPGR antibody) at dilution of 1:200 (under 40x lens). Heat mediated antigen retrieval with Tris-EDTA buffer (pH 9.0).

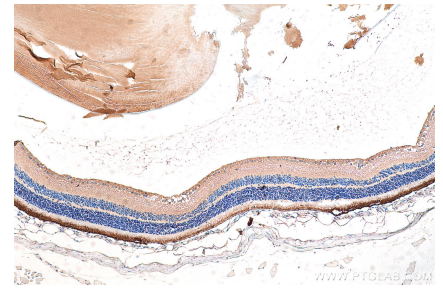


The antibody 16891-1-AP show endogenous RPGR in Ciliary.

IF result of anti-RPGR (16891-1-AP) in hTERT-RPE1 cell by Dr. Seongjin Seo.



Immunohistochemical analysis of paraffin-embedded human kidney tissue slide using 16891-1-AP (RPGR Antibody) at dilution of 1:50 (under 10x lens).



Immunohistochemical analysis of paraffin-embedded mouse eye tissue slide using 16891-1-AP (RPGR antibody) at dilution of 1:200 (under 10x lens). Heat mediated antigen retrieval with Tris-EDTA buffer (pH 9.0).