

For Research Use Only

# C1qC Polyclonal antibody

Catalog Number: 16889-1-AP **2 Publications**



## Basic Information

<b>Catalog Number:</b> 16889-1-AP	<b>GenBank Accession Number:</b> BC009016	<b>Purification Method:</b> Antigen affinity purification
<b>Size:</b> 200 µg/ml	<b>GeneID (NCBI):</b> 714	<b>Recommended Dilutions:</b> WB 1:2000-1:10000 IHC 1:20-1:200
<b>Source:</b> Rabbit	<b>UNIPROT ID:</b> P02747	
<b>Isotype:</b> IgG	<b>Full Name:</b> complement component 1, q subcomponent, C chain	
<b>Immunogen Catalog Number:</b> AG10400	<b>Calculated MW:</b> 245 aa, 26 kDa	
	<b>Observed MW:</b> 24-26 kDa	

## Applications

<b>Tested Applications:</b> IHC, WB, ELISA	<b>Positive Controls:</b> WB: human plasma, mouse serum IHC: human liver tissue,
<b>Cited Applications:</b> WB	
<b>Species Specificity:</b> human, mouse	
<b>Cited Species:</b> human	

**Note-IHC: suggested antigen retrieval with TE buffer pH 9.0; (\*) Alternatively, antigen retrieval may be performed with citrate buffer pH 6.0**

## Background Information

The first component of complement, C1, is a calcium-dependent complex of the 3 subcomponents C1q, C1r, and C1s. C1q is composed of 18 polypeptide chains: six A-chains, six B-chains, and six C-chains. Each chain contains a collagen-like region located near the N terminus and a C-terminal globular region. Deficiency of C1q has been associated with lupus erythematosus and glomerulonephritis. This antibody is raised against C1qC which is the C-chain polypeptide of human complement subcomponent C1q.

## Notable Publications

Author	Pubmed ID	Journal	Application
Wei Dong	36471393	World J Surg Oncol	WB
Wentao Yao	36992705	Front Genet	WB

## Storage

**Storage:**  
Store at -20°C. Stable for one year after shipment.  
**Storage Buffer:**  
PBS with 0.02% sodium azide and 50% glycerol pH 7.3.  
Aliquoting is unnecessary for -20°C storage

For technical support and original validation data for this product please contact:

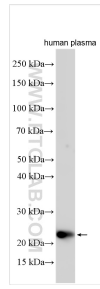
T: 4006900926

E: Proteintech-CN@ptglab.com

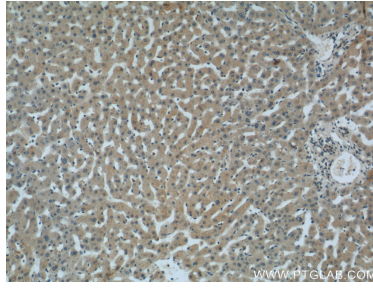
W: ptgcn.com

**This product is exclusively available under Proteintech Group brand and is not available to purchase from any other manufacturer.**

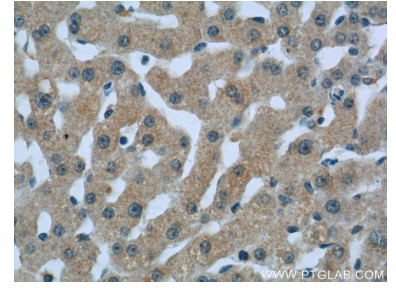
## Selected Validation Data



human plasma was subjected to SDS PAGE followed by western blot with 16889-1-AP (C1QC antibody) at dilution of 1:5000 incubated at room temperature for 1.5 hours.



Immunohistochemical analysis of paraffin-embedded human liver tissue slide using 16889-1-AP (C1QC Antibody) at dilution of 1:50 (under 10x lens).



Immunohistochemical analysis of paraffin-embedded human liver tissue slide using 16889-1-AP (C1QC Antibody) at dilution of 1:50 (under 40x lens).