

For Research Use Only

ATAD1 Polyclonal antibody

Catalog Number: 16882-1-AP



Basic Information

Catalog Number:

16882-1-AP

Size:

400 µg/ml

Source:

Rabbit

Isotype:

IgG

Immunogen Catalog Number:

AG10343

GenBank Accession Number:

BC010868

GeneID (NCBI):

84896

UNIPROT ID:

Q8NBU5

Full Name:

ATPase family, AAA domain containing 1

Calculated MW:

361 aa, 41 kDa

Observed MW:

32 kDa

Purification Method:

Antigen affinity purification

Recommended Dilutions:

WB 1:500-1:2000

IP 0.5-4.0 µg for 1.0-3.0 mg of total protein lysate

Applications

Tested Applications:

IP, WB, ELISA

Species Specificity:

human, mouse, rat

Positive Controls:

WB : HepG2 cells, mouse brain tissue, rat brain tissue

IP : mouse brain tissue,

Background Information

The mitochondrial AAA (ATPase Associated with diverse cellular Activities) protein ATAD1 (in humans; Msp1 in yeast) removes mislocalized membrane proteins, as well as stuck import substrates from the mitochondrial outer membrane, facilitating their re-insertion into their cognate organelles and maintaining mitochondria's protein import capacity.

Storage

Storage:

Store at -20°C. Stable for one year after shipment.

Storage Buffer:

PBS with 0.02% sodium azide and 50% glycerol pH 7.3.

Aliquoting is unnecessary for -20°C storage

For technical support and original validation data for this product please contact:

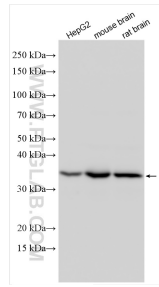
T: 4006900926

E: Proteintech-CN@ptglab.com

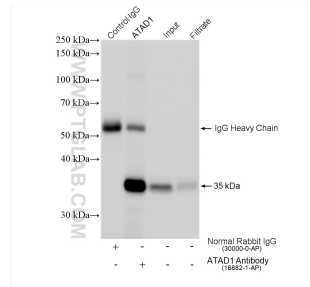
W: ptgcn.com

This product is exclusively available under Proteintech Group brand and is not available to purchase from any other manufacturer.

Selected Validation Data



Various lysates were subjected to SDS PAGE followed by western blot with 16882-1-AP (ATAD1 antibody) at dilution of 1:1000 incubated at room temperature for 1.5 hours.



IP result of anti-ATAD1 (IP:16882-1-AP, 4ug; Detection:16882-1-AP 1:1000) with mouse brain tissue lysate 1280 ug.