

For Research Use Only

RAB27A-specific Polyclonal antibody



Catalog Number: 16868-1-AP

Featured Product

1 Publications

Basic Information

Catalog Number:

16868-1-AP

Size:

350 µg/ml

Source:

Rabbit

Isotype:

IgG

GenBank Accession Number:

NM_004580

GeneID (NCBI):

5873

UNIPROT ID:

P51159

Full Name:

RAB27A, member RAS oncogene family

Calculated MW:

25 kDa

Observed MW:

25 kDa

Purification Method:

Antigen affinity purification

Recommended Dilutions:

WB 1:500-1:3000

IHC 1:50-1:500

Applications

Tested Applications:

IHC, WB, ELISA

Cited Applications:

WB

Species Specificity:

human, rat

Cited Species:

mouse

Note-IHC: suggested antigen retrieval with TE buffer pH 9.0; (*) Alternatively, antigen retrieval may be performed with citrate buffer pH 6.0

Positive Controls:

WB : HL-60 cells, K562, PC-12 cells, U-87 MG cells

IHC : human lymphoma tissue, human liver cancer tissue

Background Information

Rab27A is a member of a large family of Ras-related small GTPases. The protein is membrane-bound and may be involved in protein transport and small GTPase mediated signal transduction. Recent studies suggest that Rab27A is associated with melanosomes in pigmented cells and regulates melanosome transport via its interaction with actin-based cellular motors such as myosin Va and myosin VIIa. RAB27A is also required for regulated secretion in cytotoxic T lymphocytes. Rab27A is implicated in several diseases, including Griscelli syndrome, choroideremia, and the Hermansky-Pudlak syndrome mouse model, gunmetal.

Notable Publications

Author	Pubmed ID	Journal	Application
Lay Thant	35932574	Biochem Biophys Res Commun	WB

Storage

Storage:

Store at -20°C. Stable for one year after shipment.

Storage Buffer:

PBS with 0.02% sodium azide and 50% glycerol pH 7.3.

Aliquoting is unnecessary for -20°C storage

For technical support and original validation data for this product please contact:

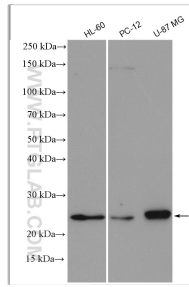
T: 4006900926

E: Proteintech-CN@ptglab.com

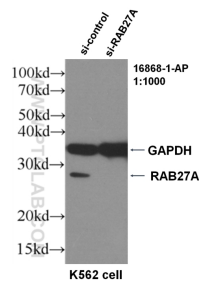
W: ptgcn.com

This product is exclusively available under Proteintech Group brand and is not available to purchase from any other manufacturer.

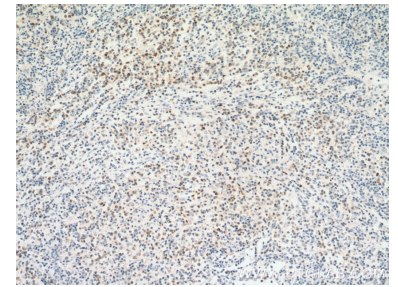
Selected Validation Data



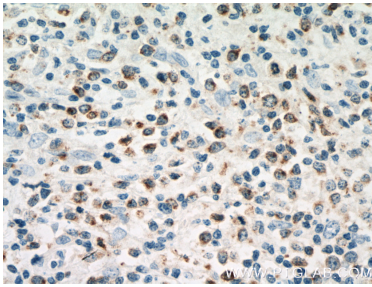
Various lysates were subjected to SDS PAGE followed by western blot with 16868-1-AP (RAB27A-specific antibody) at dilution of 1:1500 incubated at room temperature for 1.5 hours.



WB result of RAB27A antibody (16868-1-AP, 1:1000) with si-Control and si-RAB27A transfected K562 cells.



Immunohistochemical analysis of paraffin-embedded human lymphoma tissue slide using 16868-1-AP (RAB27A-specific antibody) at dilution of 1:200 (under 10x lens. Heat mediated antigen retrieval with Tris-EDTA buffer (pH 9.0).



Immunohistochemical analysis of paraffin-embedded human lymphoma tissue slide using 16868-1-AP (RAB27A-specific antibody) at dilution of 1:200 (under 40x lens. Heat mediated antigen retrieval with Tris-EDTA buffer (pH 9.0).