

For Research Use Only

# RAB3A-specific Polyclonal antibody

Catalog Number: 16865-1-AP



## Basic Information

**Catalog Number:**

16865-1-AP

**Size:**

550 µg/ml

**Source:**

Rabbit

**Isotype:**

IgG

**GenBank Accession Number:**

NM\_002866

**GeneID (NCBI):**

5864

**UNIPROT ID:**

P20336

**Full Name:**

RAB3A, member RAS oncogene family

**Calculated MW:**

25 kDa

**Observed MW:**

25 kDa

**Purification Method:**

Antigen affinity purification

**Recommended Dilutions:**

WB 1:500-1:2000

IHC 1:50-1:500

IF 1:10-1:100

## Applications

**Tested Applications:**

IF/ICC, IHC, WB, ELISA

**Species Specificity:**

human, mouse, rat

**Note-IHC: suggested antigen retrieval with TE buffer pH 9.0; (\*) Alternatively, antigen retrieval may be performed with citrate buffer pH 6.0**

**Positive Controls:**

WB: mouse brain tissue, rat brain tissue

IHC: human pancreas tissue,

IF: HeLa cells,

## Background Information

The Rab3 subfamily includes Rab3A, Rab3B, Rab3C, and Rab3D, involving in the exocytosis of neurotransmitters and hormones. Rab 3A is found to be abundant in presynaptic nerve terminals and is also found to be crucial in acrosomal exocytosis in human spermatozoa. This antibody is specific to Rab3A.

## Storage

**Storage:**

Store at -20°C. Stable for one year after shipment.

**Storage Buffer:**

PBS with 0.02% sodium azide and 50% glycerol pH 7.3.

Aliquoting is unnecessary for -20°C storage

For technical support and original validation data for this product please contact:

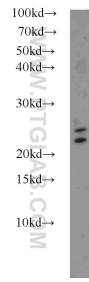
T: 4006900926

E: [Proteintech-CN@ptglab.com](mailto:Proteintech-CN@ptglab.com)

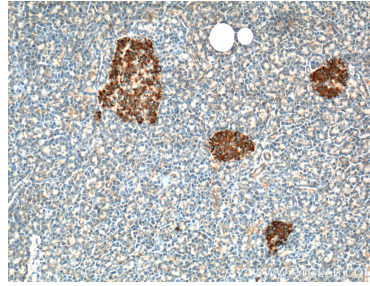
W: [ptgcn.com](http://ptgcn.com)

**This product is exclusively available under Proteintech Group brand and is not available to purchase from any other manufacturer.**

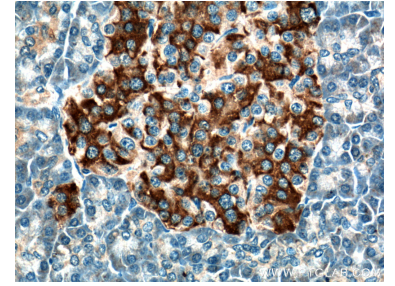
## Selected Validation Data



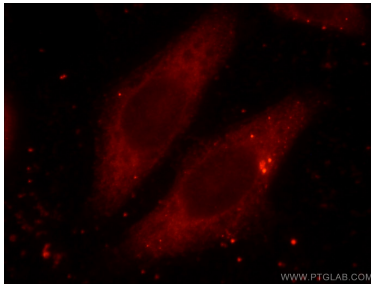
mouse brain tissue were subjected to SDS PAGE followed by western blot with 16865-1-AP (RAB3A-specific antibody) at dilution of 1:1000 incubated at room temperature for 1.5 hours.



Immunohistochemical analysis of paraffin-embedded human pancreas tissue slide using 16865-1-AP (RAB3A-specific Antibody) at dilution of 1:200 (under 10x lens).



Immunohistochemical analysis of paraffin-embedded human pancreas tissue slide using 16865-1-AP (RAB3A-specific Antibody) at dilution of 1:200 (under 40x lens).



Immunofluorescent analysis of HeLa cells using 16865-1-AP (RAB3A-specific antibody) at dilution of 1:25 and Rhodamine-Goat anti-Rabbit IgG.