

For Research Use Only

HEBP1 Polyclonal antibody

Catalog Number: 16842-1-AP

Featured Product



Basic Information

Catalog Number:

16842-1-AP

Size:

300 ug/ml

Source:

Rabbit

Isotype:

IgG

Immunogen Catalog Number:

AG10538

GenBank Accession Number:

BC016277

GeneID (NCBI):

50865

UNIPROT ID:

Q9NRV9

Full Name:

heme binding protein 1

Calculated MW:

189 aa, 21 kDa

Observed MW:

21 kDa

Purification Method:

Antigen affinity purification

Recommended Dilutions:

WB 1:500-1:3000

IHC 1:50-1:500

Applications

Tested Applications:

WB, IHC, ELISA

Species Specificity:

human, mouse, rat

Note-IHC: suggested antigen retrieval with TE buffer pH 9.0; (*) Alternatively, antigen retrieval may be performed with citrate buffer pH 6.0

Positive Controls:

WB : L02 cells, A549 cells, mouse liver tissue, rat liver tissue

IHC : human liver cancer tissue, mouse brain tissue

Background Information

HEBP1 (heme binding protein 1) is an intracellular tetrapyrrole-binding protein. Catalog# 16842-1-AP is a rabbit polyclonal antibody raised against the full-length of human HEBP1. The MW of this protein is 21 kDa, and this antibody specially recognises the 21 kDa protein.

Storage

Storage:

Store at -20°C. Stable for one year after shipment.

Storage Buffer:

PBS with 0.02% sodium azide and 50% glycerol pH 7.3.

Aliquoting is unnecessary for -20°C storage

For technical support and original validation data for this product please contact:

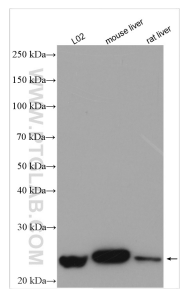
T: 4006900926

E: Proteintech-CN@ptglab.com

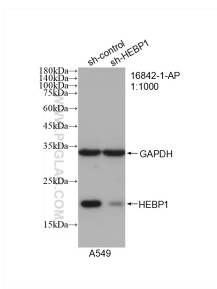
W: ptgcn.com

This product is exclusively available under Proteintech Group brand and is not available to purchase from any other manufacturer.

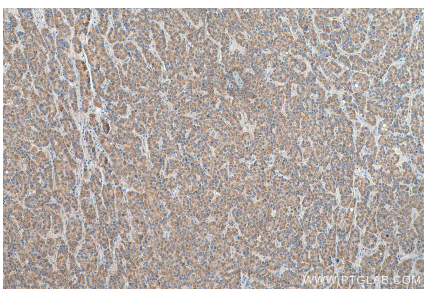
Selected Validation Data



Various lysates were subjected to SDS PAGE followed by western blot with 16842-1-AP (HEBP1 antibody) at dilution of 1:1500 incubated at room temperature for 1.5 hours.



WB result of HEBP1 antibody (16842-1-AP; 1:1000; incubated at room temperature for 1.5 hours) with sh-Control and sh-HEBP1 transfected A549 cells.



Immunohistochemical analysis of paraffin-embedded human liver cancer tissue slide using 16842-1-AP (HEBP1 antibody) at dilution of 1:200 (under 10x lens). Heat mediated antigen retrieval with Tris-EDTA buffer (pH 9.0).