

For Research Use Only

SPR Polyclonal antibody

Catalog Number: 16822-1-AP

4 Publications



Basic Information

Catalog Number:

16822-1-AP

Size:

600 µg/ml

Source:

Rabbit

Isotype:

IgG

Immunogen Catalog Number:

AG10395

GenBank Accession Number:

BC017310

GeneID (NCBI):

6697

UNIPROT ID:

P35270

Full Name:

sepiapterin reductase (7,8-dihydrobiopterin:NADP+ oxidoreductase)

Calculated MW:

261 aa, 28 kDa

Observed MW:

28 kDa

Purification Method:

Antigen affinity purification

Recommended Dilutions:

WB 1:500-1:2000

IP 0.5-4.0 µg for 1.0-3.0 mg of total protein lysate

IHC 1:100-1:400

IF/ICC 1:10-1:100

Applications

Tested Applications:

WB, IHC, IF/ICC, IP, ELISA

Cited Applications:

WB

Species Specificity:

human, mouse, rat

Cited Species:

human, mouse

Note-IHC: suggested antigen retrieval with TE buffer pH 9.0; (*) Alternatively, antigen retrieval may be performed with citrate buffer pH 6.0

Positive Controls:

WB : HepG2 cells, rat heart tissue, rat liver tissue, human liver tissue, K-562 cells

IP : mouse liver tissue,

IHC : human liver cancer tissue,

IF/ICC : Hela cells,

Background Information

Notable Publications

Author	Pubmed ID	Journal	Application
Angus Lindsay	33580591	Acta Physiol (Oxf)	WB
Mariluz Soula	32778843	Nat Chem Biol	WB
Masamitsu Sone	39300059	Cell Death Dis	WB

Storage

Storage:

Store at -20°C. Stable for one year after shipment.

Storage Buffer:

PBS with 0.02% sodium azide and 50% glycerol pH 7.3.

Aliquoting is unnecessary for -20°C storage

For technical support and original validation data for this product please contact:

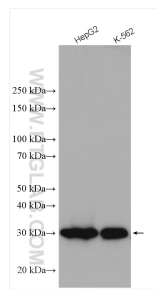
T: 4006900926

E: Proteintech-CN@ptglab.com

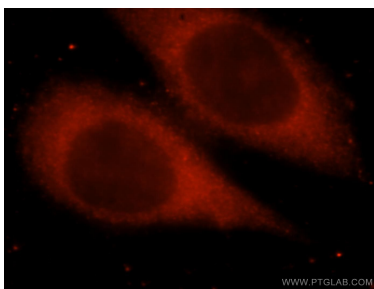
W: ptgcn.com

This product is exclusively available under Proteintech Group brand and is not available to purchase from any other manufacturer.

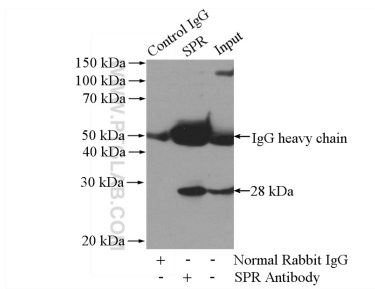
Selected Validation Data



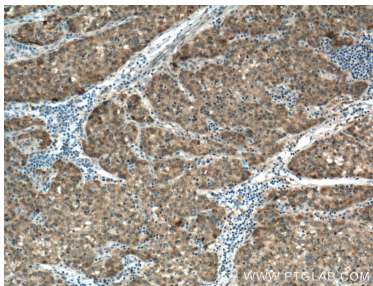
Various lysates were subjected to SDS PAGE followed by western blot with 16822-1-AP (SPR antibody) at dilution of 1:1000 incubated at room temperature for 1.5 hours.



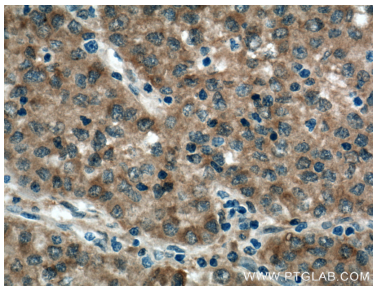
Immunofluorescent analysis of HeLa cells, using SPR antibody 16822-1-AP at 1:25 dilution and Rhodamine-labeled goat anti-rabbit IgG (red).



IP result of anti-SPR (IP:16822-1-AP, 4ug; Detection:16822-1-AP 1:500) with mouse liver tissue lysate 4000ug.



Immunohistochemical analysis of paraffin-embedded human liver cancer tissue slide using 16822-1-AP (SPR Antibody) at dilution of 1:200 (under 10x lens). Heat mediated antigen retrieval with Tris-EDTA buffer (pH 9.0).



Immunohistochemical analysis of paraffin-embedded human liver cancer tissue slide using 16822-1-AP (SPR Antibody) at dilution of 1:200 (under 40x lens). Heat mediated antigen retrieval with Tris-EDTA buffer (pH 9.0).