

For Research Use Only

# p130Cas / BCAR1 Polyclonal antibody

Catalog Number: 16815-1-AP



## Basic Information

**Catalog Number:**

16815-1-AP

**Size:**

550 ug/ml

**Source:**

Rabbit

**Isotype:**

IgG

**Immunogen Catalog Number:**

AG10354

**GenBank Accession Number:**

BC062556

**GeneID (NCBI):**

9564

**UNIPROT ID:**

P56945

**Full Name:**

breast cancer anti-estrogen resistance

1

**Calculated MW:**

870 aa, 93 kDa

**Observed MW:**

116 kDa

**Purification Method:**

Antigen affinity purification

**Recommended Dilutions:**

WB 1:1000-1:8000

IP 0.5-4.0 ug for 1.0-3.0 mg of total protein lysate

IHC 1:50-1:500

IF/ICC 1:50-1:500

## Applications

**Tested Applications:**

WB, IHC, IF/ICC, FC (Intra), IP, ELISA

**Species Specificity:**

human, mouse, rat

**Note-IHC: suggested antigen retrieval with TE buffer pH 9.0; (\*) Alternatively, antigen retrieval may be performed with citrate buffer pH 6.0**

**Positive Controls:**

WB : HeLa cells, A431 cells, HepG2 cells, T-47D cells

IP : RAW 264.7 cells,

IHC : human colon cancer tissue,

IF/ICC : HeLa cells,

## Background Information

### Storage

**Storage:**

Store at -20°C. Stable for one year after shipment.

**Storage Buffer:**

PBS with 0.02% sodium azide and 50% glycerol pH 7.3.

Aliquoting is unnecessary for -20°C storage

For technical support and original validation data for this product please contact:

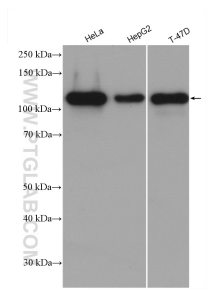
T: 4006900926

E: [Proteintech-CN@ptglab.com](mailto:Proteintech-CN@ptglab.com)

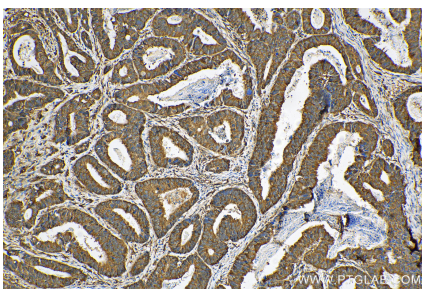
W: [ptgcn.com](http://ptgcn.com)

This product is exclusively available under Proteintech Group brand and is not available to purchase from any other manufacturer.

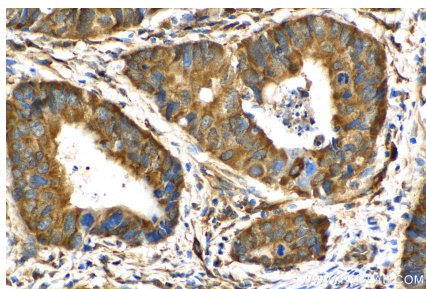
Selected Validation Data



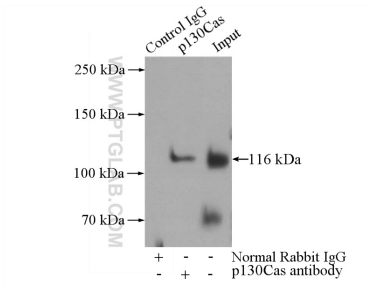
Various lysates were subjected to SDS PAGE followed by western blot with 16815-1-AP (p130Cas / BCAR1 antibody) at dilution of 1:4000 incubated at room temperature for 1.5 hours.



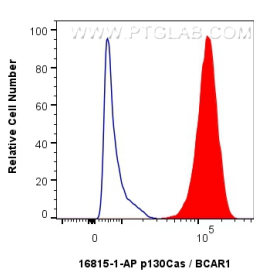
Immunohistochemical analysis of paraffin-embedded human colon cancer tissue slide using 16815-1-AP (p130Cas / BCAR1 antibody) at dilution of 1:200 (under 10x lens). Heat mediated antigen retrieval with Tris-EDTA buffer (pH 9.0).



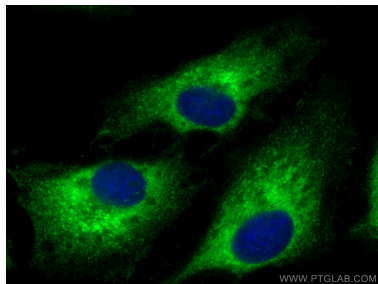
Immunohistochemical analysis of paraffin-embedded human colon cancer tissue slide using 16815-1-AP (p130Cas / BCAR1 antibody) at dilution of 1:200 (under 40x lens). Heat mediated antigen retrieval with Tris-EDTA buffer (pH 9.0).



IP result of anti-p130Cas / BCAR1 (IP:16815-1-AP, 4ug; Detection:16815-1-AP 1:600) with RAW 264.7 cells lysate 4000ug.



1x10<sup>6</sup> A431 cells were intracellularly stained with 0.25 ug p130Cas / BCAR1 Polyclonal antibody (16815-1-AP) and CoraLite®488-Conjugated Goat Anti-Rabbit IgG(H+L) (SA00013-2)(red), or 0.25 ug Rabbit IgG control Rabbit PolyAb (30000-O-AP) (blue). Cells were fixed with 4% PFA and permeabilized with Flow Cytometry Perm Buffer (PF00011-C).



Immunofluorescent analysis of (-20°C Methanol) fixed HeLa cells using p130Cas / BCAR1 antibody (16815-1-AP) at dilution of 1:200 and CoraLite®488-Conjugated AffiniPure Goat Anti-Rabbit IgG(H+L).