

LMF1 Polyclonal antibody

Catalog Number: 16812-1-AP

1 Publications

Basic Information

Catalog Number:

16812-1-AP

Size:

350 µg/ml

Source:

Rabbit

Isotype:

IgG

Immunogen Catalog Number:

AG10349

GenBank Accession Number:

BC010738

GeneID (NCBI):

64788

UNIPROT ID:

Q96S06

Full Name:

lipase maturation factor 1

Calculated MW:

567 aa, 65 kDa

Observed MW:

65-70 kDa

Purification Method:

Antigen affinity purification

Recommended Dilutions:

WB 1:500-1:1000

IHC 1:20-1:200

Applications

Tested Applications:

IHC, WB, ELISA

Cited Applications:

WB

Species Specificity:

human, mouse, rat

Cited Species:

mouse

Note-IHC: suggested antigen retrieval with TE buffer pH 9.0; (*) Alternatively, antigen retrieval may be performed with citrate buffer pH 6.0

Positive Controls:

WB : SKOV-3 cells,

IHC : human liver cancer tissue,

Background Information

LMF1, also named as C16orf26 and TMEM112, is involved in the maturation of lipoprotein lipase (LPL) and hepatic lipase in endoplasmic reticulum. It is required for maturation and transport of active lipoprotein lipase (LPL) through the secretory pathway.

Notable Publications

Author	Pubmed ID	Journal	Application
Miao Zhang	36175800	Int J Legal Med	WB

Storage

Storage:

Store at -20°C. Stable for one year after shipment.

Storage Buffer:

PBS with 0.02% sodium azide and 50% glycerol pH 7.3.

Aliquoting is unnecessary for -20°C storage

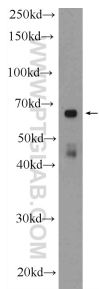
For technical support and original validation data for this product please contact:

T: 4006900926

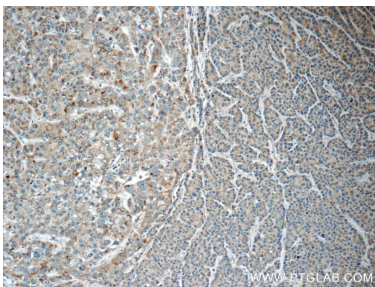
E: Proteintech-CN@ptglab.comW: ptgcn.com

This product is exclusively available under Proteintech Group brand and is not available to purchase from any other manufacturer.

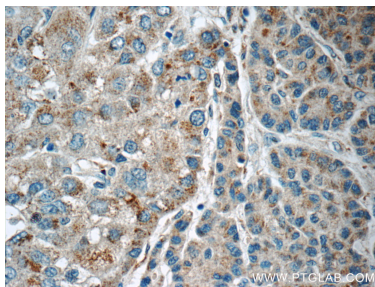
Selected Validation Data



SKOV-3 cells were subjected to SDS PAGE followed by western blot with 16812-1-AP (LMF1 Antibody) at dilution of 1:600 incubated at room temperature for 1.5 hours.



Immunohistochemical analysis of paraffin-embedded human liver cancer tissue slide using 16812-1-AP (LMF1 Antibody) at dilution of 1:50 (under 10x lens).



Immunohistochemical analysis of paraffin-embedded human liver cancer tissue slide using 16812-1-AP (LMF1 Antibody) at dilution of 1:50 (under 40x lens).