

For Research Use Only

RPLP2 Polyclonal antibody

Catalog Number: 16805-1-AP

2 Publications



Basic Information

Catalog Number:

16805-1-AP

Concentration:

600 µg/ml

Source:

Rabbit

Isotype:

IgG

Immunogen Catalog Number:

AG10293

GenBank Accession Number:

BC062314

GeneID (NCBI):

6181

UNIPROT ID:

P05387

Full Name:

ribosomal protein, large, P2

Calculated MW:

115 aa, 12 kDa

Observed MW:

15 kDa

Purification Method:

Antigen affinity purification

Recommended Dilutions:

WB 1:500-1:2000

IHC 1:50-1:500

Applications

Tested Applications:

WB, IHC, ELISA

Cited Applications:

WB

Species Specificity:

human, mouse

Cited Species:

human

Note-IHC: suggested antigen retrieval with TE buffer pH 9.0; (*) Alternatively, antigen retrieval may be performed with citrate buffer pH 6.0

Positive Controls:

WB : HL-60 cells, mouse liver tissue

IHC : mouse kidney tissue, human breast cancer tissue

Background Information

Notable Publications

Author	Pubmed ID	Journal	Application
Chandreyee Datta	36306353	Sci Adv	WB
Natalia Khalatyan	39786991	Cell Rep	WB

Storage

Storage:

Store at -20°C. Stable for one year after shipment.

Storage Buffer:

PBS with 0.02% sodium azide and 50% glycerol pH 7.3.

Aliquoting is unnecessary for -20°C storage

For technical support and original validation data for this product please contact:

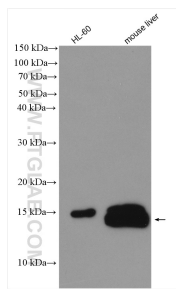
T: 4006900926

E: Proteintech-CN@ptglab.com

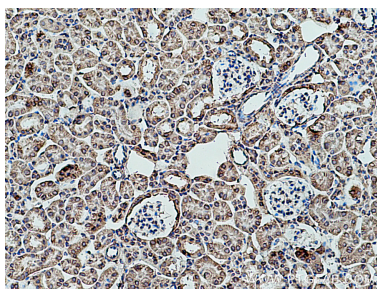
W: ptgcn.com

This product is exclusively available under Proteintech Group brand and is not available to purchase from any other manufacturer.

Selected Validation Data



Various lysates were subjected to SDS PAGE followed by western blot with 16805-1-AP (RPLP2 antibody) at dilution of 1:1000 incubated at room temperature for 1.5 hours.



Immunohistochemical analysis of paraffin-embedded mouse kidney tissue slide using 16805-1-AP (RPLP2 antibody) at dilution of 1:200 (under 10x lens). Heat mediated antigen retrieval with Tris-EDTA buffer (pH 9.0).