

For Research Use Only

# RNF26 Polyclonal antibody, PBS Only

Catalog Number: 16802-1-PBS

Featured Product



## Basic Information

Catalog Number:

16802-1-PBS

Source:

Rabbit

Isotype:

IgG

Immunogen Catalog Number:

AG10285

GenBank Accession Number:

BC000058

GeneID (NCBI):

79102

UNIPROT ID:

Q9BY78

Full Name:

ring finger protein 26

Calculated MW:

433 aa, 48 kDa

Observed MW:

48 kDa

Purification Method:

Antigen affinity purification

## Applications

Tested Applications:

WB, Indirect ELISA

Species Specificity:

human, mouse, rat

## Background Information

RNF26 is concentrated predominantly in the PN segment of the ER membrane, which corresponds with its ability to position all endosomal vesicles in the PN region of the cell. RNF26 resides in the perinuclear ER membrane, and this feature enables it to spatially restrict various endolysosomal species by attracting ubiquitin-binding vesicle adaptors through a ubiquitin-independent ER MCS. RNF26 is an important E3 ubiquitin ligase that has been associated with poor prognosis in bladder cancer. And RNF26 is prevalent in normal human tissues but is upregulated in several human tumor cell lines (HL-60, HeLa S3 and SW480) (PMID: 33472082, 37519262).

## Storage

Storage:

Store at -80°C.

The product is shipped with ice packs. Upon receipt, store it immediately at -80°C

Storage Buffer:

PBS only, pH7.3

For technical support and original validation data for this product please contact:

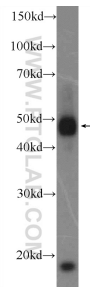
T: 4006900926

E: [Proteintech-CN@ptglab.com](mailto:Proteintech-CN@ptglab.com)

W: [ptgcn.com](http://ptgcn.com)

This product is exclusively available under Proteintech Group brand and is not available to purchase from any other manufacturer.

## Selected Validation Data



HepG2 cells were subjected to SDS PAGE followed by western blot with 16802-1-AP (RNF26 Antibody) at dilution of 1:300 incubated at room temperature for 1.5 hours. This data was developed using the same antibody clone with 16802-1-PBS in a different storage buffer formulation.