

For Research Use Only

METTL5 Polyclonal antibody

Catalog Number: 16791-1-AP

Featured Product

16 Publications



Basic Information

Catalog Number:

16791-1-AP

Size:

750 ug/ml

Source:

Rabbit

Isotype:

IgG

Immunogen Catalog Number:

AG10232

GenBank Accession Number:

BC000921

GeneID (NCBI):

29081

UNIPROT ID:

Q9NRN9

Full Name:

methyltransferase like 5

Calculated MW:

209 aa, 24 kDa

Observed MW:

24-27 kDa

Purification Method:

Antigen affinity purification

Recommended Dilutions:

WB 1:2000-1:12000

IP 0.5-4.0 ug for 1.0-3.0 mg of total protein lysate

IHC 1:20-1:200

IF/ICC 1:200-1:800

Applications

Tested Applications:

WB, IHC, IF/ICC, IP, ELISA

Cited Applications:

WB, IHC, RIP

Species Specificity:

human

Cited Species:

human

Note-IHC: suggested antigen retrieval with TE buffer pH 9.0; (*) Alternatively, antigen retrieval may be performed with citrate buffer pH 6.0

Positive Controls:

WB : HEK-293 cells, HeLa cells, K-562 cells, PC-3 cells

IP : PC-3 cells,

IHC : human brain tissue,

IF/ICC : HepG2 cells,

Background Information

METTL5 is a member of the METTL family of S-adenosyl-methionine-dependent methyltransferases that adds m6A to a specific site, nucleotide A-1832 of 18S rRNA, hereafter referred to as m6A1832. METTL5 is localized in the nucleolus and cytoplasm.

Notable Publications

Author	Pubmed ID	Journal	Application
Jian Zhang	36465115	iScience	WB
Caraline Sepich-Poore	35033535	J Biol Chem	WB
Yanchuang Han	35295259	Front Cardiovasc Med	WB

Storage

Storage:

Store at -20°C. Stable for one year after shipment.

Storage Buffer:

PBS with 0.02% sodium azide and 50% glycerol pH 7.3.

Aliquoting is unnecessary for -20°C storage

For technical support and original validation data for this product please contact:

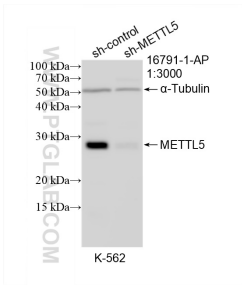
T: 4006900926

E: Proteintech-CN@ptglab.com

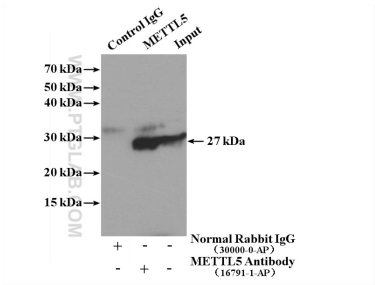
W: ptgcn.com

This product is exclusively available under Proteintech Group brand and is not available to purchase from any other manufacturer.

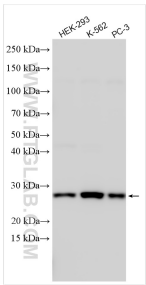
Selected Validation Data



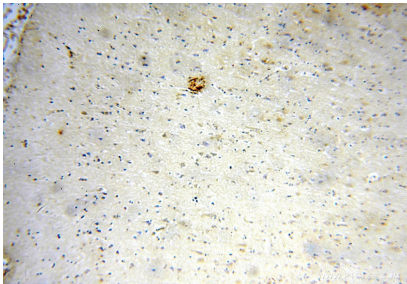
WB result of METTL5 antibody (16791-1-AP; 1:3000; incubated at room temperature for 1.5 hours) with sh-Control and sh-METTL5 transfected K-562 cells.



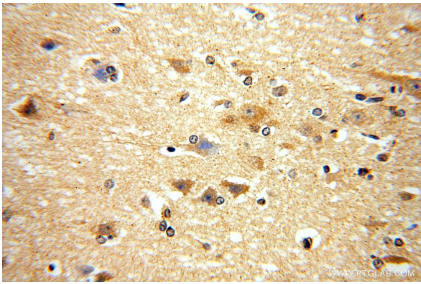
IP result of anti-METTL5 (IP:16791-1-AP, 4ug; Detection:16791-1-AP 1:500) with PC-3 cells lysate 3840 ug.



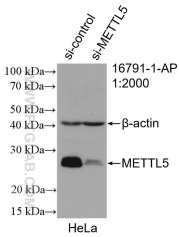
Various lysates were subjected to SDS PAGE followed by western blot with 16791-1-AP (METTL5 antibody) at dilution of 1:6000 incubated at room temperature for 1.5 hours.



Immunohistochemical analysis of paraffin-embedded human brain using 16791-1-AP (METTL5 antibody) at dilution of 1:100 (under 10x lens).



Immunohistochemical analysis of paraffin-embedded human brain using 16791-1-AP (METTL5 antibody) at dilution of 1:100 (under 40x lens).



WB result of METTL5 antibody (16791-1-AP; 1:1000; incubated at room temperature for 1.5 hours) with sh-Control and sh-METTL5 transfected HeLa cells.



Immunofluorescent analysis of (-20°C Ethanol) fixed HepG2 cells using METTL5 antibody (16791-1-AP) at dilution of 1:400 and CoraLite®488-Conjugated Goat Anti-Rabbit IgG(H+L), CL594-phalloidin (red).