

For Research Use Only

# LACTB2 Polyclonal antibody

Catalog Number: 16783-1-AP

Featured Product



## Basic Information

**Catalog Number:**

16783-1-AP

**Size:**

600 µg/ml

**Source:**

Rabbit

**Isotype:**

IgG

**Immunogen Catalog Number:**

AG10213

**GenBank Accession Number:**

BC000878

**GeneID (NCBI):**

51110

**UNIPROT ID:**

Q53H82

**Full Name:**

lactamase, beta 2

**Calculated MW:**

288 aa, 33 kDa

**Observed MW:**

33 kDa

**Purification Method:**

Antigen affinity purification

**Recommended Dilutions:**

WB 1:1000-1:8000

IP 0.5-4.0 µg for 1.0-3.0 mg of total protein lysate

IHC 1:20-1:200

IF 1:10-1:100

## Applications

**Tested Applications:**

IF/ICC, IHC, IP, WB, ELISA

**Species Specificity:**

human, mouse, rat

**Note-IHC: suggested antigen retrieval with TE buffer pH 9.0; (\*) Alternatively, antigen retrieval may be performed with citrate buffer pH 6.0**

**Positive Controls:**

WB : MCF-7 cells, PC-3 cells, Y79 cells, A549 cells, HeLa cells

IP : A549 cells,

IHC : human cervix tissue,

IF : HepG2 cells,

## Background Information

### Storage

**Storage:**

Store at -20°C. Stable for one year after shipment.

**Storage Buffer:**

PBS with 0.02% sodium azide and 50% glycerol pH 7.3.

Aliquoting is unnecessary for -20°C storage

For technical support and original validation data for this product please contact:

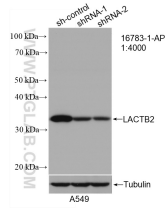
T: 4006900926

E: Proteintech-CN@ptglab.com

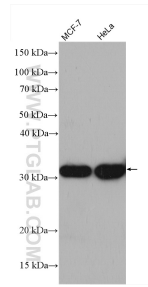
W: ptgcn.com

This product is exclusively available under Proteintech Group brand and is not available to purchase from any other manufacturer.

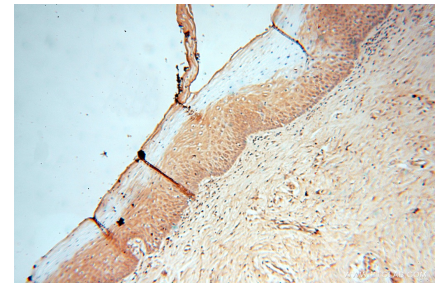
## Selected Validation Data



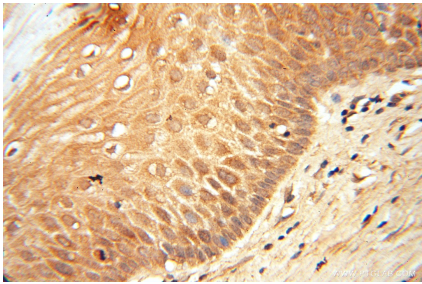
WB result of LACTB2 antibody (16783-1-AP; 1:4000; incubated at room temperature for 1.5 hours) with sh-Control and sh-LACTB2 transfected A549 cells.



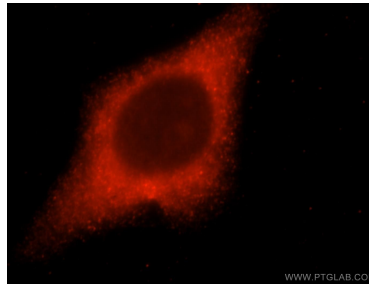
Various lysates were subjected to SDS PAGE followed by western blot with 16783-1-AP (LACTB2 antibody) at dilution of 1:4000 incubated at room temperature for 1.5 hours.



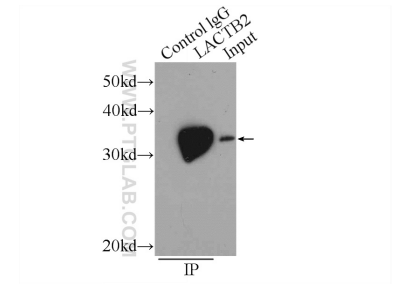
Immunohistochemical analysis of paraffin-embedded human cervix using 16783-1-AP (LACTB2 antibody) at dilution of 1:100 (under 10x lens).



Immunohistochemical analysis of paraffin-embedded human cervix using 16783-1-AP (LACTB2 antibody) at dilution of 1:100 (under 40x lens).



Immunofluorescent analysis of HepG2 cells, using LACTB2 antibody 16783-1-AP at 1:25 dilution and Rhodamine-labeled goat anti-rabbit IgG (red).



IP result of anti-LACTB2 (IP:16783-1-AP, 3ug; Detection:16783-1-AP 1:700) with A549 cells lysate 520ug.