

For Research Use Only

DcR2 Polyclonal antibody

Catalog Number: 16781-1-AP **3 Publications**



Basic Information

Catalog Number: 16781-1-AP	GenBank Accession Number: BC052270	Purification Method: Antigen affinity purification
Size: 800 µg/ml	GeneID (NCBI): 8793	Recommended Dilutions: WB 1:1000-1:4000 IHC 1:20-1:200
Source: Rabbit	UNIPROT ID: Q9UBN6	
Isotype: IgG	Full Name: tumor necrosis factor receptor superfamily, member 10d, decoy with truncated death domain	
Immunogen Catalog Number: AG10208	Calculated MW: 386 aa, 42 kDa	
	Observed MW: 50-55 kDa	

Applications

Tested Applications: IHC, WB, ELISA	Positive Controls: WB : A549 cells, DU 145 cells, HeLa cells IHC : human kidney tissue,
Cited Applications: WB, IHC	
Species Specificity: human	
Cited Species: human	

Note-IHC: suggested antigen retrieval with TE buffer pH 9.0; (*) Alternatively, antigen retrieval may be performed with citrate buffer pH 6.0

Background Information

Notable Publications

Author	Pubmed ID	Journal	Application
Fu K K	21785459	Oncogene	WB
Yingxi Xu	26257076	Sci Rep	WB, IHC
Jiamei Han	36747580	Mater Today Bio	WB

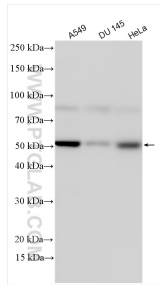
Storage

Storage:
Store at -20°C. Stable for one year after shipment.
Storage Buffer:
PBS with 0.02% sodium azide and 50% glycerol pH 7.3.
Aliquoting is unnecessary for -20°C storage

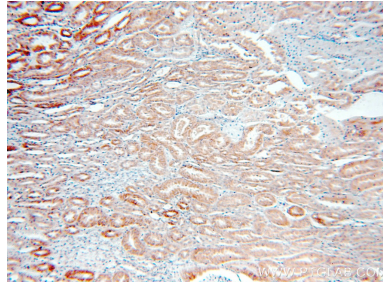
For technical support and original validation data for this product please contact:
T: 4006900926 E: Proteintech-CN@ptglab.com W: ptgcn.com

This product is exclusively available under Proteintech Group brand and is not available to purchase from any other manufacturer.

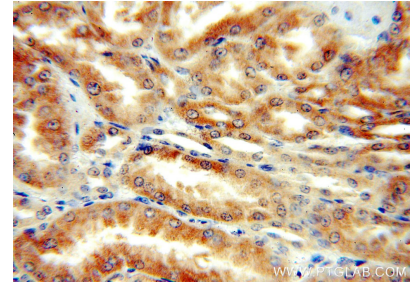
Selected Validation Data



Various lysates were subjected to SDS PAGE followed by western blot with 16781-1-AP (DcR2 antibody) at dilution of 1:2000 incubated at room temperature for 1.5 hours.



Immunohistochemical analysis of paraffin-embedded human kidney using 16781-1-AP (DcR2 antibody) at dilution of 1:50 (under 10x lens).



Immunohistochemical analysis of paraffin-embedded human kidney using 16781-1-AP (DcR2 antibody) at dilution of 1:50 (under 40x lens).