

For Research Use Only

SCUBE3 Polyclonal antibody

Catalog Number: 16773-1-AP **2 Publications**



Basic Information

| | | |
|---|--|--|
| Catalog Number: 16773-1-AP | GenBank Accession Number: BC052263 | Purification Method: Antigen affinity purification |
| Size: 240 µg/ml | GeneID (NCBI): 222663 | Recommended Dilutions: WB 1:200-1:1000 IHC 1:20-1:200 |
| Source: Rabbit | UNIPROT ID: Q8IX30 | |
| Isotype: IgG | Full Name: signal peptide, CUB domain, EGF-like 3 | |
| Immunogen Catalog Number: AG10085 | Calculated MW: 992 aa, 109 kDa | |
| | Observed MW: 130 kDa | |

Applications

| | |
|--|--|
| Tested Applications: IHC, WB, ELISA | Positive Controls: WB: mouse kidney tissue, mouse lung tissue IHC: human kidney tissue, |
| Cited Applications: WB, IHC | |
| Species Specificity: human, mouse, rat | |
| Cited Species: human, mouse | |
| Note-IHC: suggested antigen retrieval with TE buffer pH 9.0; (*) Alternatively, antigen retrieval may be performed with citrate buffer pH 6.0 | |

Background Information

SCUBE3 is a secreted glycoprotein that belongs to the SCUBE family. Members of the SCUBE family are secreted plasma membrane-associated proteins characterised by a N-terminal signal peptide sequence, multiple EGF domains, a N-linked glycosylated spacer region and a C-terminal CUB region. SCUBE3 may play a role in bone cell biology (PMID: 15234972). It may also have a role in the regulation of cardiac growth and remodeling responses (PMID: 17442284). Besides, SCUBE3 has been reported to be involved in lung cancer progression (PMID: 21441952; 23420440).

Notable Publications

| Author | Pubmed ID | Journal | Application |
|------------|-----------|---------------------|-------------|
| Nannan Han | 30098429 | Gene | IHC |
| Jing Shen | 38109990 | Mol Cell Endocrinol | WB |

Storage

Storage:
Store at -20°C. Stable for one year after shipment.
Storage Buffer:
PBS with 0.02% sodium azide and 50% glycerol pH 7.3.
Aliquoting is unnecessary for -20°C storage

For technical support and original validation data for this product please contact:

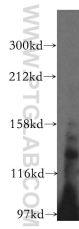
T: 4006900926

E: Proteintech-CN@ptglab.com

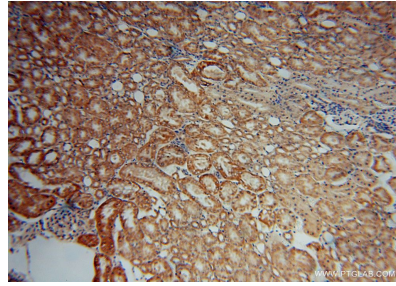
W: ptgcn.com

This product is exclusively available under Proteintech Group brand and is not available to purchase from any other manufacturer.

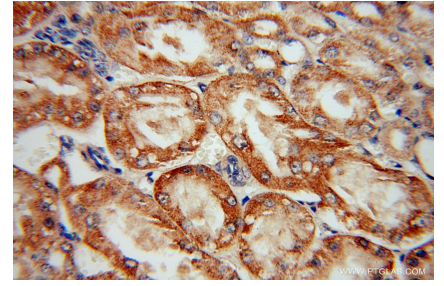
Selected Validation Data



mouse kidney tissue were subjected to SDS PAGE followed by western blot with 16773-1-AP (SCUBE3 antibody) at dilution of 1:300 incubated at room temperature for 1.5 hours.



Immunohistochemical analysis of paraffin-embedded human kidney using 16773-1-AP (SCUBE3 antibody) at dilution of 1:50 (under 10x lens).



Immunohistochemical analysis of paraffin-embedded human kidney using 16773-1-AP (SCUBE3 antibody) at dilution of 1:50 (under 40x lens).