

For Research Use Only

GLT25D1 Polyclonal antibody

Catalog Number: 16768-1-AP

Featured Product

8 Publications



Basic Information

Catalog Number:

16768-1-AP

Size:

450 ug/ml

Source:

Rabbit

Isotype:

IgG

Immunogen Catalog Number:

AG10346

GenBank Accession Number:

BC020492

GeneID (NCBI):

79709

UNIPROT ID:

Q8NBJS

Full Name:

glycosyltransferase 25 domain containing 1

Calculated MW:

231 aa, 27 kDa

Observed MW:

72 kDa

Purification Method:

Antigen affinity purification

Recommended Dilutions:

WB 1:1000-1:4000

IP 0.5-4.0 ug for 1.0-3.0 mg of total protein lysate

IHC 1:50-1:500

IF/ICC 1:20-1:200

Applications

Tested Applications:

WB, IHC, IF/ICC, IP, ELISA

Cited Applications:

WB, IHC, IF

Species Specificity:

human, mouse, rat

Cited Species:

human, mouse, rat

Note-IHC: suggested antigen retrieval with TE buffer pH 9.0; (*) Alternatively, antigen retrieval may be performed with citrate buffer pH 6.0

Positive Controls:

WB : SH-SY5Y cells,

IP : HeLa cells,

IHC : human ovary tumor tissue, mouse placenta tissue

IF/ICC : SH-SY5Y cells,

Background Information

Notable Publications

Author	Pubmed ID	Journal	Application
Randy T Cowling	28923350	J Mol Cell Cardiol	WB
Masahiko Terajima	31726007	Biochemistry	WB
Satoko Miyatake	30412317	Ann Neurol	WB,IF

Storage

Storage:

Store at -20°C. Stable for one year after shipment.

Storage Buffer:

PBS with 0.02% sodium azide and 50% glycerol pH 7.3.

Aliquoting is unnecessary for -20°C storage

For technical support and original validation data for this product please contact:

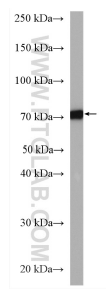
T: 4006900926

E: Proteintech-CN@ptglab.com

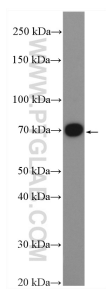
W: ptgcn.com

This product is exclusively available under Proteintech Group brand and is not available to purchase from any other manufacturer.

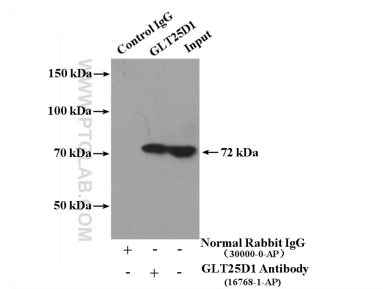
Selected Validation Data



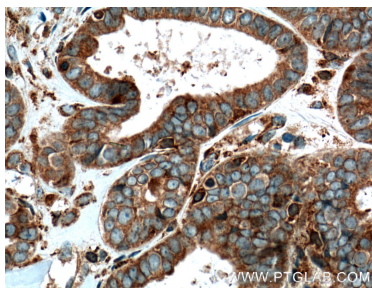
SH-SY5Y cells were subjected to SDS PAGE followed by western blot with 16768-1-AP (GLT25D1 antibody) at dilution of 1:1500 incubated at room temperature for 1.5 hours.



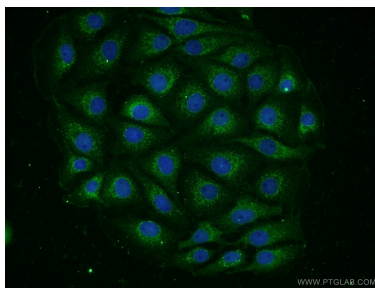
SH-SY5Y cells were subjected to SDS PAGE followed by western blot with 16768-1-AP (GLT25D1 antibody) at dilution of 1:2000 incubated at room temperature for 1.5 hours.



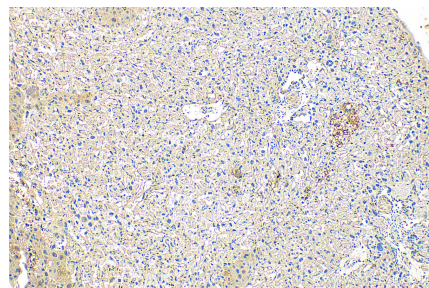
IP result of anti-GLT25D1 (IP:16768-1-AP, 4ug; Detection:16768-1-AP 1:500) with HeLa cells lysate 4000ug.



Immunohistochemical analysis of paraffin-embedded human ovary tumor tissue slide using 16768-1-AP (GLT25D1 antibody) at dilution of 1:200 (under 10x lens. Heat mediated antigen retrieval with Tris-EDTA buffer (pH 9.0).



Immunofluorescent analysis of SH-SY5Y cells using 16768-1-AP (GLT25D1 antibody) at dilution of 1:50 and Alexa Fluor 488-conjugated AffiniPure Goat Anti-Rabbit IgG(H+L).



Immunohistochemical analysis of paraffin-embedded mouse placenta tissue slide using 16768-1-AP (GLT25D1 antibody) at dilution of 1:400 (under 10x lens). Heat mediated antigen retrieval with Tris-EDTA buffer (pH 9.0).