

For Research Use Only

# MRPL40 Polyclonal antibody, PBS Only

Catalog Number:16767-1-PBS



## Basic Information

<b>Catalog Number:</b> 16767-1-PBS	<b>GenBank Accession Number:</b> BC009707	<b>Purification Method:</b> Antigen affinity purification
<b>Size:</b> 1 mg/ml	<b>GeneID (NCBI):</b> 64976	
<b>Source:</b> Rabbit	<b>UNIPROT ID:</b> Q9NQ50	
<b>Isotype:</b> IgG	<b>Full Name:</b> mitochondrial ribosomal protein L40	
<b>Immunogen Catalog Number:</b> AG10341	<b>Calculated MW:</b> 206 aa, 24 kDa	
	<b>Observed MW:</b> 18-24 kDa	

## Applications

**Tested Applications:**  
WB, IHC, IF/ICC, IP, Indirect ELISA

**Species Specificity:**  
human

## Background Information

### Storage

**Storage:**  
Store at -80°C.  
**The product is shipped with ice packs. Upon receipt, store it immediately at -80°C**

**Storage Buffer:**  
PBS Only

For technical support and original validation data for this product please contact:

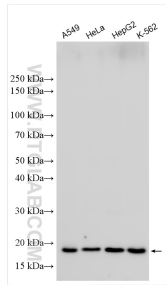
T: 4006900926

E: [Proteintech-CN@ptglab.com](mailto:Proteintech-CN@ptglab.com)

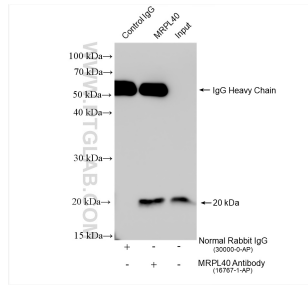
W: [ptgcn.com](http://ptgcn.com)

**This product is exclusively available under Proteintech Group brand and is not available to purchase from any other manufacturer.**

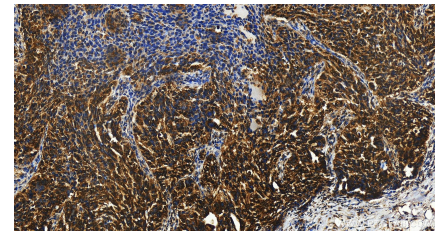
## Selected Validation Data



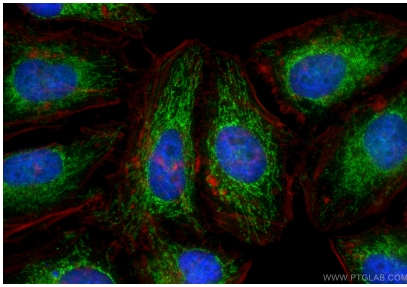
Various lysates were subjected to SDS PAGE followed by western blot with 16767-1-AP (MRPL40 antibody) at dilution of 1:3000 incubated at room temperature for 1.5 hours. This data was developed using the same antibody clone with 16767-1-PBS in a different storage buffer formulation.



IP result of anti-MRPL40 (IP:16767-1-AP, 4ug; Detection:16767-1-AP 1:2000) with HeLa cells lysate 1920 ug. This data was developed using the same antibody clone with 16767-1-PBS in a different storage buffer formulation.



Immunohistochemical analysis of paraffin-embedded human ovary cancer tissue slide using 16767-1-AP (MRPL40 antibody) at dilution of 1:200 (under 20x lens). Heat mediated antigen retrieval with Tris-EDTA buffer (pH 9.0). This data was developed using the same antibody clone with 16767-1-PBS in a different storage buffer formulation.



Immunofluorescent analysis of (4% PFA) fixed HeLa cells using MRPL40 antibody (16767-1-AP) at dilution of 1:500 and CoralLite@488-Conjugated Goat Anti-Rabbit IgG(H+L) (SA00013-2), CL594-phalloidin (red). This data was developed using the same antibody clone with 16767-1-PBS in a different storage buffer formulation.