

For Research Use Only

# MRPL40 Polyclonal antibody

Catalog Number: 16767-1-AP



## Basic Information

**Catalog Number:**

16767-1-AP

**Size:**

1200 ug/ml

**Source:**

Rabbit

**Isotype:**

IgG

**Immunogen Catalog Number:**

AG10341

**GenBank Accession Number:**

BC009707

**GeneID (NCBI):**

64976

**UNIPROT ID:**

Q9NQ50

**Full Name:**

mitochondrial ribosomal protein L40

**Calculated MW:**

206 aa, 24 kDa

**Observed MW:**

18-24 kDa

**Purification Method:**

Antigen affinity purification

**Recommended Dilutions:**

WB 1:1000-1:6000

IP 0.5-4.0 ug for 1.0-3.0 mg of total protein lysate

IHC 1:50-1:500

IF/ICC 1:250-1:1000

## Applications

**Tested Applications:**

WB, IHC, IF/ICC, IP, ELISA

**Species Specificity:**

human

**Note-IHC:** suggested antigen retrieval with **TE buffer pH 9.0; (\*)** Alternatively, antigen retrieval may be performed with **citrate buffer pH 6.0**

**Positive Controls:**

**WB :** A549 cells, HeLa cells, HepG2 cells, K-562 cells

**IP :** HeLa cells,

**IHC :** human ovary cancer tissue,

**IF/ICC :** HeLa cells,

## Background Information

### Storage

**Storage:**

Store at -20°C. Stable for one year after shipment.

**Storage Buffer:**

PBS with 0.02% sodium azide and 50% glycerol pH 7.3.

Aliquoting is unnecessary for -20°C storage

For technical support and original validation data for this product please contact:

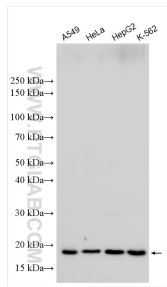
T: 4006900926

E: [Proteintech-CN@ptglab.com](mailto:Proteintech-CN@ptglab.com)

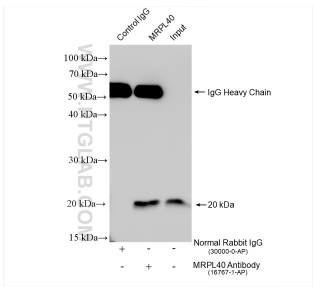
W: [ptgcn.com](http://ptgcn.com)

This product is exclusively available under Proteintech Group brand and is not available to purchase from any other manufacturer.

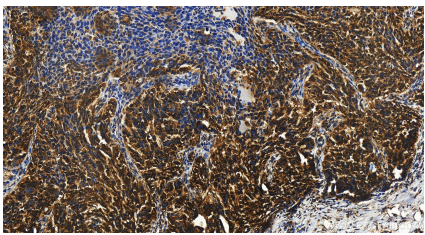
Selected Validation Data



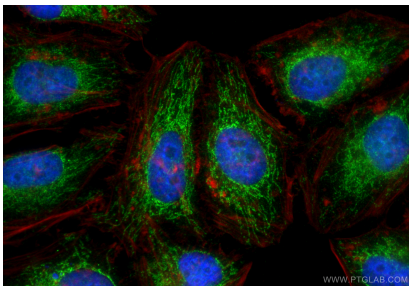
Various lysates were subjected to SDS PAGE followed by western blot with 16767-1-AP (MRPL40 antibody) at dilution of 1:3000 incubated at room temperature for 1.5 hours.



IP result of anti-MRPL40 (IP:16767-1-AP, 4ug; Detection:16767-1-AP 1:2000) with HeLa cells lysate 1920 ug.



Immunohistochemical analysis of paraffin-embedded human ovary cancer tissue slide using 16767-1-AP (MRPL40 antibody) at dilution of 1:200 (under 20x lens). Heat mediated antigen retrieval with Tris-EDTA buffer (pH 9.0).



Immunofluorescent analysis of (4% PFA) fixed HeLa cells using MRPL40 antibody (16767-1-AP) at dilution of 1:500 and CoraLite®488-Conjugated Goat Anti-Rabbit IgG(H+L) (SA00013-2), CL594-phalloidin (red).