

# IGDCC3 Polyclonal antibody

Catalog Number: 16759-1-AP

## Basic Information

**Catalog Number:**

16759-1-AP

**Size:**

550 µg/ml

**Source:**

Rabbit

**Isotype:**

IgG

**Immunogen Catalog Number:**

AG10276

**GenBank Accession Number:**

BC067107

**GeneID (NCBI):**

9543

**UNIPROT ID:**

Q8IVU1

**Full Name:**

immunoglobulin superfamily, DCC subclass, member 3

**Calculated MW:**

814 aa, 87 kDa

**Observed MW:**

87 kDa

**Purification Method:**

Antigen affinity purification

**Recommended Dilutions:**

IP 0.5-4.0 µg for 1.0-3.0 mg of total protein lysate

## Applications

**Tested Applications:**

IP, ELISA

**Species Specificity:**

human, mouse, rat

**Positive Controls:**

IP : human placenta tissue,

## Background Information

IGDCC3, also known as PUNC, is a transmembrane protein that belongs to the immunoglobulin (Ig) superfamily (PMID: 9507132). IGDCC3 contains 4 C2-type Ig-like domains and 2 fibronectin type III repeats. It is highly expressed in the developing embryo in nervous system, limbs, and inner ear (PMID: 9922388; 9507132). IGDCC3 may be involved in the cerebellar control of motor coordination (PMID: 11486040). It has also been associated with tumorigenic mechanism and prognosis of cholangiocarcinoma (PMID: 36979826).

## Storage

**Storage:**

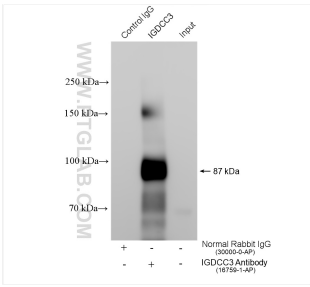
Store at -20°C. Stable for one year after shipment.

**Storage Buffer:**

PBS with 0.02% sodium azide and 50% glycerol pH 7.3.

Aliquoting is unnecessary for -20°C storage

# Selected Validation Data



IP result of anti-IGDCC3 (IP:16759-1-AP, 4ug;  
Detection:16759-1-AP 1:300) with human placenta  
tissue lysate 1200 ug.