

For Research Use Only

GPT2 Polyclonal antibody

Catalog Number: 16757-1-AP

Featured Product

29 Publications



Basic Information

Catalog Number:

16757-1-AP

Size:

500 µg/ml

Source:

Rabbit

Isotype:

IgG

Immunogen Catalog Number:

AG10273

GenBank Accession Number:

BC062555

GeneID (NCBI):

84706

UNIPROT ID:

Q8TD30

Full Name:

glutamic pyruvate transaminase
(alanine aminotransferase) 2

Calculated MW:

523 aa, 58 kDa

Observed MW:

58 kDa, 47 kDa

Purification Method:

Antigen affinity purification

Recommended Dilutions:

WB 1:500-1:3000

IP 0.5-4.0 µg for 1.0-3.0 mg of total
protein lysate

IHC 1:50-1:500

IF 1:200-1:800

Applications

Tested Applications:

FC, IF/ICC, IHC, IP, WB, ELISA

Cited Applications:

WB, IF, IHC, FC (Intra)

Species Specificity:

human, mouse, rat

Cited Species:

human, mouse

Positive Controls:

WB: mouse liver tissue, mouse kidney tissue, HepG2 cells

IP: mouse kidney tissue,

IHC: human skeletal muscle tissue, mouse brain tissue

IF: HepG2 cells,

Note-IHC: suggested antigen retrieval with TE buffer pH 9.0; (*) Alternatively, antigen retrieval may be performed with citrate buffer pH 6.0

Background Information

GPT2 (Alanine aminotransferase 2; ALT2) is a key enzyme in intermediary metabolism, catalysing the reversible transfer of the amino group of glutamate to pyruvate, yielding alanine and ketoglutarate. GPT2 protein localizes to mitochondria, and is mainly expressed in the pancreas, brain, adrenal gland, skeletal muscle and heart. Serum GPT2 is a useful marker for liver damage. Recently mutation of GPT2 has been reported to be a cause of neural disorder (27601654). 16757-1-AP antibody recognizes two different isoforms of GPT2 protein.

Notable Publications

Author	Pubmed ID	Journal	Application
Qing Ouyang	27601654	Proc Natl Acad Sci U S A	WB,IF
Bo Zhang	35499760	Cancer Res	WB
Xiao Zhang	33897873	Theranostics	WB

Storage

Storage:

Store at -20°C. Stable for one year after shipment.

Storage Buffer:

PBS with 0.02% sodium azide and 50% glycerol pH 7.3.

Aliquoting is unnecessary for -20°C storage

For technical support and original validation data for this product please contact:

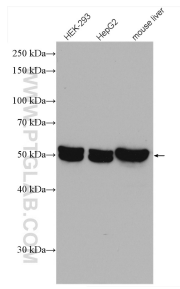
T: 4006900926

E: Proteintech-CN@ptglab.com

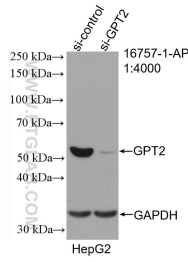
W: ptgcn.com

This product is exclusively available under Proteintech Group brand and is not available to purchase from any other manufacturer.

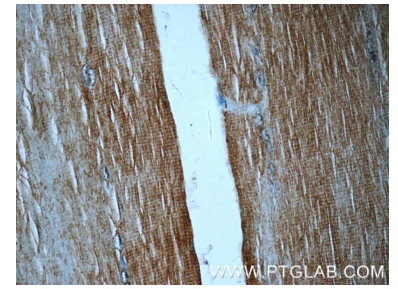
Selected Validation Data



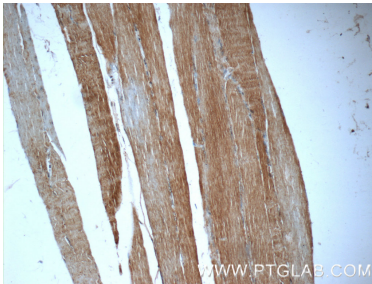
Various lysates were subjected to SDS PAGE followed by western blot with 16757-1-AP (GPT2 antibody) at dilution of 1:1500 incubated at room temperature for 1.5 hours.



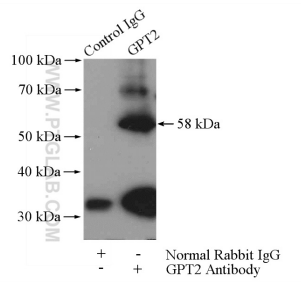
WB result of GPT2 antibody (16757-1-AP; 1:4000; incubated at room temperature for 1.5 hours) with sh-Control and sh-GPT2 transfected HepG2 cells.



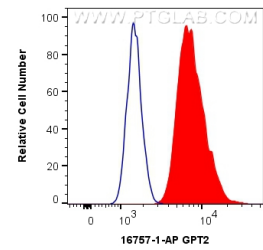
Immunohistochemical analysis of paraffin-embedded human skeletal muscle tissue slide using 16757-1-AP (GPT2 Antibody) at dilution of 1:50 (under 40x lens).



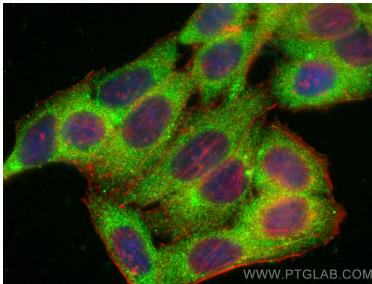
Immunohistochemical analysis of paraffin-embedded human skeletal muscle tissue slide using 16757-1-AP (GPT2 Antibody) at dilution of 1:50 (under 10x lens).



IP result of anti-GPT2 (IP:16757-1-AP, 4ug; Detection:16757-1-AP 1:500) with mouse kidney tissue lysate 7200ug.



1×10^6 HepG2 cells were intracellularly stained with 0.4 ug Anti-Human GPT2 (16757-1-AP) and CoraLite®488-Conjugated AffiniPure Goat Anti-Rabbit IgG(H+L) at dilution 1:1000 (red), or 0.4 ug Isotype Control. Cells were fixed with 4% PFA and permeabilized with Flow Cytometry Perm Buffer (PF00011-C).



Immunofluorescent analysis of (-20°C Ethanol) fixed HepG2 cells using GPT2 antibody (16757-1-AP) at dilution of 1:400 and CoraLite®488-Conjugated AffiniPure Goat Anti-Rabbit IgG(H+L), CL594-phalloidin (red).