

For Research Use Only

# RCC2 Polyclonal antibody

Catalog Number: 16755-1-AP **1 Publications**



## Basic Information

**Catalog Number:**

16755-1-AP

**Size:**

500 µg/ml

**Source:**

Rabbit

**Isotype:**

IgG

**Immunogen Catalog Number:**

AG10271

**GenBank Accession Number:**

BC042141

**GeneID (NCBI):**

55920

**UNIPROT ID:**

Q9P258

**Full Name:**

regulator of chromosome condensation 2

**Calculated MW:**

522 aa, 56 kDa

**Observed MW:**

56 kDa

**Purification Method:**

Antigen affinity purification

**Recommended Dilutions:**

WB 1:1000-1:4000

IHC 1:250-1:1000

## Applications

**Tested Applications:**

IHC, WB, ELISA

**Cited Applications:**

WB

**Species Specificity:**

human, mouse, rat

**Cited Species:**

human

**Note-IHC: suggested antigen retrieval with TE buffer pH 9.0; (\*) Alternatively, antigen retrieval may be performed with citrate buffer pH 6.0**

**Positive Controls:**

**WB:** HEK-293T cells, PC-3 cells, HeLa cells, HUVEC cells, MOLT-4 cells, NCI-H1299 cells

**IHC:** human colon cancer tissue, human ovary tumor tissue, human stomach cancer tissue, mouse testis tissue, rat colon tissue, rat testis tissue

## Background Information

RCC2 (also known as TD60) is a guanine exchange factor that is active on RalA, a small GTPase. RCC2 and RalA are both essential for proper kinetochore-microtubule function in early mitosis. RCC2 has been shown to be a biomarker for colorectal cancer.

## Notable Publications

Author	Pubmed ID	Journal	Application
Nan Zhang	35217832	Exp Mol Med	WB

## Storage

**Storage:**

Store at -20°C. Stable for one year after shipment.

**Storage Buffer:**

PBS with 0.02% sodium azide and 50% glycerol pH 7.3.

Aliquoting is unnecessary for -20°C storage

For technical support and original validation data for this product please contact:

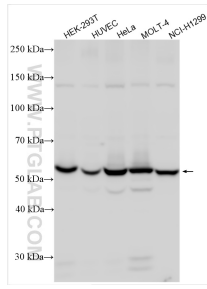
T: 4006900926

E: Proteintech-CN@ptglab.com

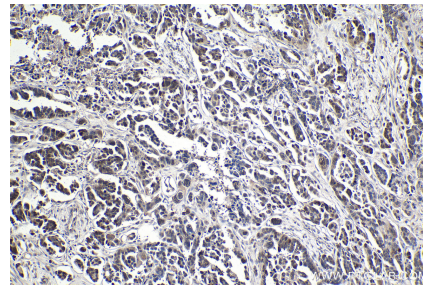
W: ptgcn.com

**This product is exclusively available under Proteintech Group brand and is not available to purchase from any other manufacturer.**

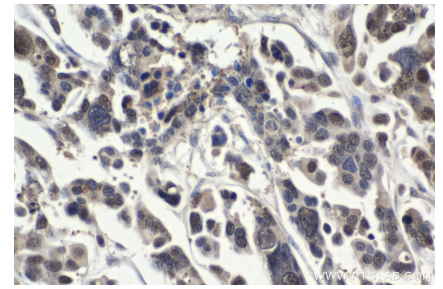
## Selected Validation Data



Various lysates were subjected to SDS PAGE followed by western blot with 16755-1-AP (RCC2 antibody) at dilution of 1:2000 incubated at room temperature for 1.5 hours.



Immunohistochemical analysis of paraffin-embedded human colon cancer tissue slide using 16755-1-AP (RCC2 antibody) at dilution of 1:500 (under 10x lens). Heat mediated antigen retrieval with Tris-EDTA buffer (pH 9.0).



Immunohistochemical analysis of paraffin-embedded human colon cancer tissue slide using 16755-1-AP (RCC2 antibody) at dilution of 1:500 (under 40x lens). Heat mediated antigen retrieval with Tris-EDTA buffer (pH 9.0).