

For Research Use Only

RILPL1 Polyclonal antibody

Catalog Number: 16732-1-AP

Featured Product

1 Publications



Basic Information

Catalog Number:

16732-1-AP

Size:

900 ug/ml

Source:

Rabbit

Isotype:

IgG

Immunogen Catalog Number:

AG10192

GenBank Accession Number:

BC080626

GeneID (NCBI):

353116

UNIPROT ID:

Q5EBL4

Full Name:

Rab interacting lysosomal protein-like 1

Calculated MW:

252 aa, 29 kDa

Observed MW:

50 kDa

Purification Method:

Antigen affinity purification

Recommended Dilutions:

WB 1:500-1:1000

Applications

Tested Applications:

WB, ELISA

Cited Applications:

IF

Species Specificity:

human, mouse, rat

Cited Species:

human

Positive Controls:

WB : HepG2 cells, HeLa cells

Background Information

Notable Publications

Author	Pubmed ID	Journal	Application
Jiaxi Yu	35148830	Am J Hum Genet	IF

Storage

Storage:

Store at -20°C. Stable for one year after shipment.

Storage Buffer:

PBS with 0.02% sodium azide and 50% glycerol pH 7.3.

Aliquoting is unnecessary for -20°C storage

For technical support and original validation data for this product please contact:

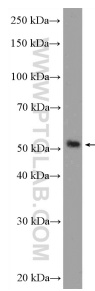
T: 4006900926

E: Proteintech-CN@ptglab.com

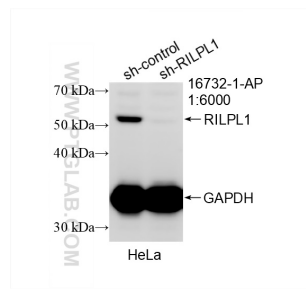
W: ptgcn.com

This product is exclusively available under Proteintech Group brand and is not available to purchase from any other manufacturer.

Selected Validation Data



HepG2 cells were subjected to SDS PAGE followed by western blot with 16732-1-AP (RILPL1 Antibody) at dilution of 1:600 incubated at room temperature for 1.5 hours.



WB result of RILPL1 antibody (16732-1-AP; 1:6000; incubated at room temperature for 1.5 hours) with sh-Control and sh-RILPL1 transfected HeLa cells.