

For Research Use Only

# ARPC5 Polyclonal antibody

Catalog Number: 16717-1-AP

6 Publications



## Basic Information

Catalog Number:

16717-1-AP

Size:

300 µg/ml

Source:

Rabbit

Isotype:

IgG

Immunogen Catalog Number:

AG10144

GenBank Accession Number:

BC057237

GeneID (NCBI):

10092

UNIPROT ID:

O15511

Full Name:

actin related protein 2/3 complex,  
subunit 5, 16kDa

Calculated MW:

154 aa, 17 kDa

Observed MW:

18-20 kDa

Purification Method:

Antigen affinity purification

Recommended Dilutions:

WB 1:500-1:1000

IHC 1:250-1:1000

IF/ICC 1:200-1:800

## Applications

Tested Applications:

WB, IHC, IF/ICC, ELISA

Cited Applications:

WB, IHC

Species Specificity:

human, mouse, rat

Cited Species:

human, mouse

**Note-IHC: suggested antigen retrieval with  
TE buffer pH 9.0; (\*) Alternatively, antigen  
retrieval may be performed with citrate  
buffer pH 6.0**

Positive Controls:

WB : mouse brain tissue, rat brain tissue, mouse  
thymus tissue

IHC : mouse kidney tissue, human gliomas tissue

IF/ICC : Neuro-2a cells,

## Background Information

### Notable Publications

Author	Pubmed ID	Journal	Application
Jiying Hou	36077440	Int J Mol Sci	WB
Jason W. Lui	34468072	Pigment Cell Melanoma Res	WB
Avanti Gokhale	27927957	J Neurosci	WB

## Storage

Storage:

Store at -20°C. Stable for one year after shipment.

Storage Buffer:

PBS with 0.02% sodium azide and 50% glycerol pH 7.3.

Aliquoting is unnecessary for -20°C storage

For technical support and original validation data for this product please contact:

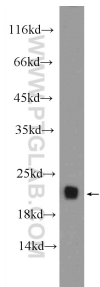
T: 4006900926

E: [Proteintech-CN@ptglab.com](mailto:Proteintech-CN@ptglab.com)

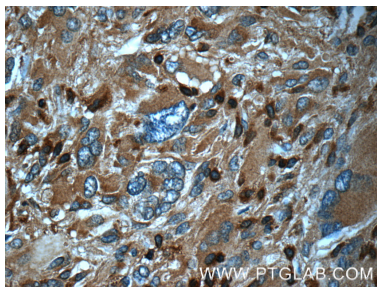
W: [ptgcn.com](http://ptgcn.com)

**This product is exclusively available under Proteintech Group brand and is not available to purchase from any other manufacturer.**

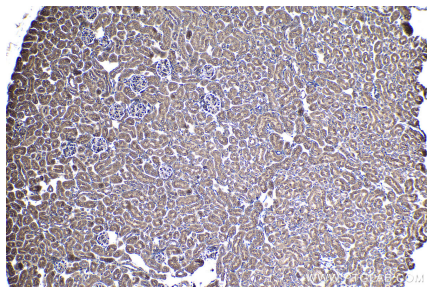
Selected Validation Data



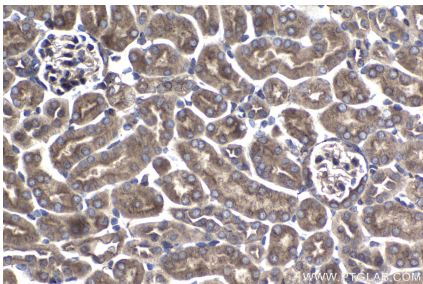
mouse brain tissue were subjected to SDS PAGE followed by western blot with 16717-1-AP (ARPC5 Antibody) at dilution of 1:600 incubated at room temperature for 1.5 hours.



Immunohistochemical analysis of paraffin-embedded human gliomas tissue slide using 16717-1-AP (ARPC5 Antibody) at dilution of 1:50 (under 40x lens).



Immunohistochemical analysis of paraffin-embedded mouse kidney tissue slide using 16717-1-AP (ARPC5 antibody) at dilution of 1:500 (under 10x lens). Heat mediated antigen retrieval with Tris-EDTA buffer (pH 9.0).



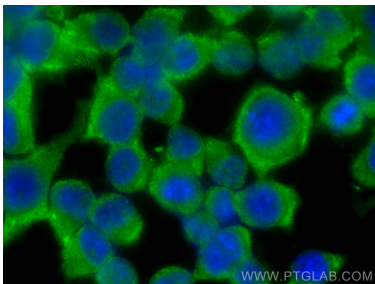
Immunohistochemical analysis of paraffin-embedded mouse kidney tissue slide using 16717-1-AP (ARPC5 antibody) at dilution of 1:500 (under 40x lens). Heat mediated antigen retrieval with Tris-EDTA buffer (pH 9.0).



Immunohistochemical analysis of paraffin-embedded mouse kidney tissue slide using 16717-1-AP (ARPC5 antibody) at dilution of 1:1000 (under 10x lens). Heat mediated antigen retrieval with Tris-EDTA buffer (pH 9.0).



Immunohistochemical analysis of paraffin-embedded mouse kidney tissue slide using 16717-1-AP (ARPC5 antibody) at dilution of 1:1000 (under 40x lens). Heat mediated antigen retrieval with Tris-EDTA buffer (pH 9.0).



Immunofluorescent analysis of (-20°C Ethanol) fixed Neuro-2a cells using ARPC5 antibody (16717-1-AP) at dilution of 1:400 and CoraLite®488-Conjugated Goat Anti-Rabbit IgG(H+L).