

For Research Use Only

# DMPK Polyclonal antibody, PBS Only

Catalog Number:16711-1-PBS



## Basic Information

Catalog Number:

16711-1-PBS

Source:

Rabbit

Isotype:

IgG

Immunogen Catalog Number:

AG10127

GenBank Accession Number:

BC062553

GeneID (NCBI):

1760

UNIPROT ID:

Q09013

Full Name:

dystrophia myotonica-protein kinase

Calculated MW:

629 aa, 69 kDa

Observed MW:

69-75 kDa

Purification Method:

Antigen affinity purification

## Applications

Tested Applications:

WB, IHC, IF/ICC, Indirect ELISA

Species Specificity:

human, mouse, rat

## Background Information

DMPK (Myotonic Dystrophy Protein Kinase) is a serine-threonine protein kinase, strongly linked to myotonic dystrophy type 1 (DM1), the most prevalent muscular dystrophy in adults (PMID: 19309729). It is best known for its association with myotonic dystrophy type 1 (DM1), a multisystemic genetic disorder characterized by myotonia, muscle wasting, cardiac conduction defects, and other systemic manifestations (PMID: 24136222).

## Storage

Storage:

Store at -80°C.

**The product is shipped with ice packs. Upon receipt, store it immediately at -80°C**

Storage Buffer:

PBS only, pH7.3

For technical support and original validation data for this product please contact:

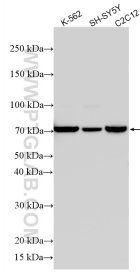
T: 4006900926

E: [Proteintech-CN@ptglab.com](mailto:Proteintech-CN@ptglab.com)

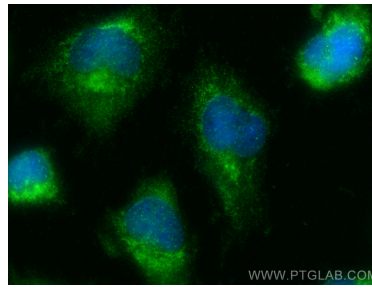
W: [ptgcn.com](http://ptgcn.com)

**This product is exclusively available under Proteintech Group brand and is not available to purchase from any other manufacturer.**

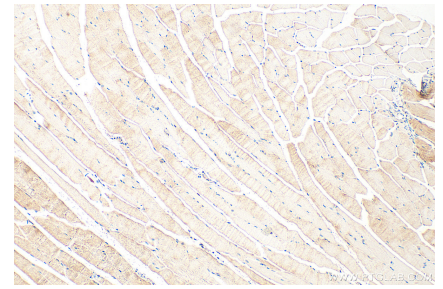
## Selected Validation Data



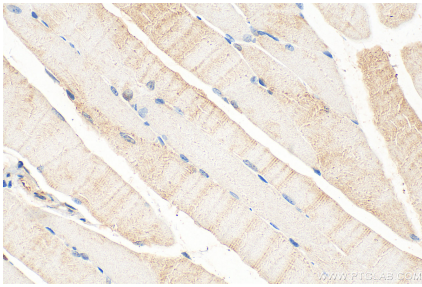
Various lysates were subjected to SDS PAGE followed by western blot with 16711-1-AP (DMPK antibody) at dilution of 1:1500 incubated at room temperature for 1.5 hours. This data was developed using the same antibody clone with 16711-1-PBS in a different storage buffer formulation.



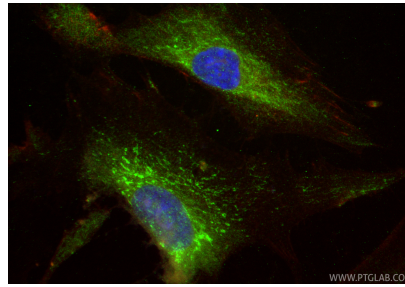
Immunofluorescent analysis of (-20°C Ethanol) fixed U-251 cells using DMPK antibody (16711-1-AP) at dilution of 1:400 and CoraLite®488-Conjugated Goat Anti-Rabbit IgG(H+L) (SA00013-2). This data was developed using the same antibody clone with 16711-1-PBS in a different storage buffer formulation.



Immunohistochemical analysis of paraffin-embedded mouse skeletal muscle tissue slide using 16711-1-AP (DMPK antibody) at dilution of 1:200 (under 10x lens). Heat mediated antigen retrieval with Tris-EDTA buffer (pH 9.0). This data was developed using the same antibody clone with 16711-1-PBS in a different storage buffer formulation.



Immunohistochemical analysis of paraffin-embedded mouse skeletal muscle tissue slide using 16711-1-AP (DMPK antibody) at dilution of 1:200 (under 40x lens). Heat mediated antigen retrieval with Tris-EDTA buffer (pH 9.0). This data was developed using the same antibody clone with 16711-1-PBS in a different storage buffer formulation.



Immunofluorescent analysis of (-20°C Ethanol) fixed HSkMC cells using DMPK antibody (16711-1-AP) at dilution of 1:200 and CoraLite®488-Conjugated Goat Anti-Rabbit IgG(H+L) (SA00013-2), CL594-Phalloidin (red). This data was developed using the same antibody clone with 16711-1-PBS in a different storage buffer formulation.