

For Research Use Only

MTH1 Polyclonal antibody, PBS Only

Catalog Number: 16705-1-PBS

Featured Product



Basic Information

Catalog Number:

16705-1-PBS

Source:

Rabbit

Isotype:

IgG

Immunogen Catalog Number:

AG10103

GenBank Accession Number:

BC014618

GeneID (NCBI):

4521

UNIPROT ID:

P36639

Full Name:

nudix (nucleoside diphosphate linked moiety X)-type motif 1

Calculated MW:

179aa, 20 kDa; 197aa, 23 kDa

Observed MW:

18-24 kDa

Purification Method:

Antigen affinity purification

Applications

Tested Applications:

WB, IHC, IF/ICC, Indirect ELISA

Species Specificity:

human, mouse, rat

Background Information

MTH1, also known as NUDT1 or 8-Oxo-dGTPase, is an important repair enzyme that prevents oxidative stress-induced DNA damage through hydrolyzing mutagenic 8-oxo-dGTP into 8-oxo-dGMP. MTH1 is expressed in postmitotic neurons as well as in proliferative tissues, and it is localized both in the mitochondria and nucleus. MTH1 might be a useful marker of oxidative stress and its level increased upon oxidative stress. Increased expression of MTH1 were also found in various cancer tissues and neurodegenerative diseases.

Storage

Storage:

Store at -80°C.

The product is shipped with ice packs. Upon receipt, store it immediately at -80°C

Storage Buffer:

PBS only, pH7.3

For technical support and original validation data for this product please contact:

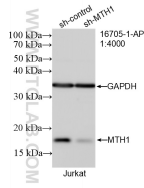
T: 4006900926

E: Proteintech-CN@ptglab.com

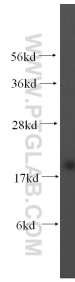
W: ptgcn.com

This product is exclusively available under Proteintech Group brand and is not available to purchase from any other manufacturer.

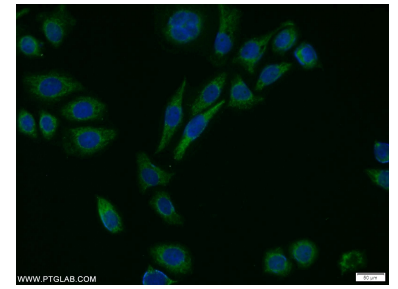
Selected Validation Data



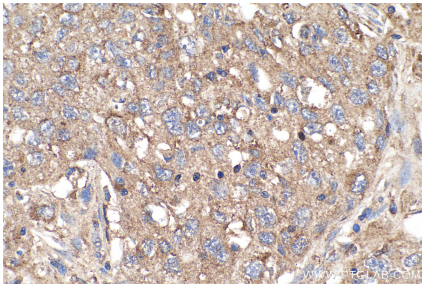
WB result of MTH1 antibody (16705-1-AP; 1:4000; incubated at room temperature for 1.5 hours) with sh-Control and sh-MTH1 transfected Jurkat cells. This data was developed using the same antibody clone with 16705-1-PBS in a different storage buffer formulation.



HepG2 cells were subjected to SDS PAGE followed by western blot with 16705-1-AP (MTH1 antibody) at dilution of 1:300 incubated at room temperature for 1.5 hours. This data was developed using the same antibody clone with 16705-1-PBS in a different storage buffer formulation.



Immunofluorescent analysis of PC-3 cells using 16705-1-AP (MTH1 antibody) at dilution of 1:25 and Alexa Fluor 488-conjugated AffiniPure Goat Anti-Rabbit IgG(H+L). This data was developed using the same antibody clone with 16705-1-PBS in a different storage buffer formulation.



Immunohistochemical analysis of paraffin-embedded human lung cancer tissue slide using 16705-1-AP (MTH1 antibody) at dilution of 1:4000 (under 40x lens). Heat mediated antigen retrieval with Tris-EDTA buffer (pH 9.0). This data was developed using the same antibody clone with 16705-1-PBS in a different storage buffer formulation.