

For Research Use Only

CA13 Polyclonal antibody

Catalog Number: 16696-1-AP

2 Publications



Basic Information

Catalog Number:

16696-1-AP

Size:

550 µg/ml

Source:

Rabbit

Isotype:

IgG

Immunogen Catalog Number:

AG10086

GenBank Accession Number:

BC052602

GeneID (NCBI):

377677

UNIPROT ID:

Q8N1Q1

Full Name:

carbonic anhydrase XIII

Calculated MW:

262 aa, 29 kDa

Observed MW:

30 kDa

Purification Method:

Antigen affinity purification

Recommended Dilutions:

WB 1:500-1:3000

IHC 1:20-1:200

IF/ICC 1:50-1:500

Applications

Tested Applications:

WB, IHC, IF/ICC, ELISA

Cited Applications:

WB, IF

Species Specificity:

human, mouse, rat

Cited Species:

human, mouse

Note-IHC: suggested antigen retrieval with TE buffer pH 9.0; (*) Alternatively, antigen retrieval may be performed with citrate buffer pH 6.0

Positive Controls:

WB: NIH/3T3 cells, mouse skeletal muscle tissue

IHC: human placenta tissue, human heart tissue, human kidney tissue, human spleen tissue, human testis tissue

IF/ICC: NIH/3T3 cells,

Background Information

Carbonic anhydrases (CAs) are zinc-containing metalloenzymes that catalyze the reversible hydration of carbon dioxide. The mammalian α -CA gene family has been reported to include at least eleven enzymatically active isoforms with different structural and catalytic properties. Four of the active CA isozymes are cytosolic (CA I, II, III, and VII), four are membrane-associated (CA IV, IX, XII, and XIV), two are mitochondrial (CA VA and VB), and one is a secretory form (CA VI). CA13 is a cytosolic protein that may play a role in embryogenesis and perturbation of its function by genetic modification could potentially lead to developmental abnormalities (PMID:14600151).

Notable Publications

Author	Pubmed ID	Journal	Application
Qiqi Wang	39618045	Anal Chem	WB
Jin-Young Koh	37322474	BMC Med Genomics	IF

Storage

Storage:

Store at -20°C. Stable for one year after shipment.

Storage Buffer:

PBS with 0.02% sodium azide and 50% glycerol pH 7.3.

Aliquoting is unnecessary for -20°C storage

For technical support and original validation data for this product please contact:

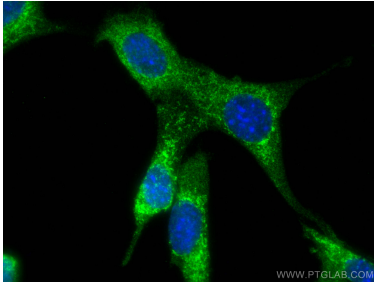
T: 4006900926

E: Proteintech-CN@ptglab.com

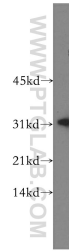
W: ptgcn.com

This product is exclusively available under Proteintech Group brand and is not available to purchase from any other manufacturer.

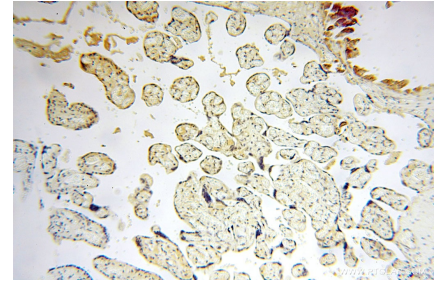
Selected Validation Data



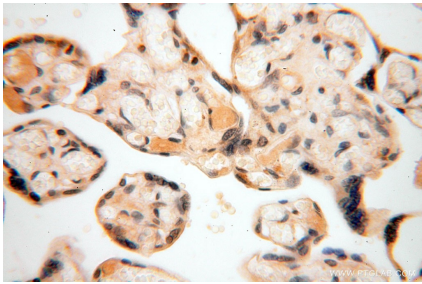
Immunofluorescent analysis of (4% PFA) fixed NIH/3T3 cells using CA13 antibody (16696-1-AP) at dilution of 1:200 and CoraLite®488-Conjugated Goat Anti-Rabbit IgG(H+L).



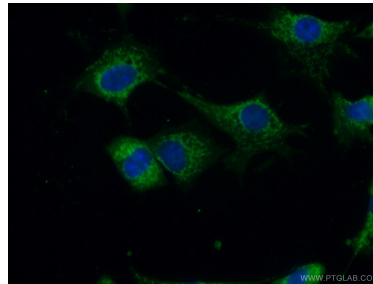
NIH/3T3 cells were subjected to SDS PAGE followed by western blot with 16696-1-AP (CA13 antibody) at dilution of 1:500 incubated at room temperature for 1.5 hours.



Immunohistochemical analysis of paraffin-embedded human placenta using 16696-1-AP (CA13 antibody) at dilution of 1:100 (under 10x lens).



Immunohistochemical analysis of paraffin-embedded human placenta using 16696-1-AP (CA13 antibody) at dilution of 1:100 (under 40x lens).



Immunofluorescent analysis of (10% Formaldehyde) fixed NIH/3T3 cells using 16696-1-AP (CA13 antibody) at dilution of 1:50 and Alexa Fluor 488-conjugated Goat Anti-Rabbit IgG(H+L).