

For Research Use Only

MTRF1L Polyclonal antibody

Catalog Number: 16694-1-AP

4 Publications



Basic Information

Catalog Number:

16694-1-AP

Size:

600 µg/ml

Source:

Rabbit

Isotype:

IgG

Immunogen Catalog Number:

AG10081

GenBank Accession Number:

BC011873

GeneID (NCBI):

54516

UNIPROT ID:

Q9UGC7

Full Name:

mitochondrial translational release factor 1-like

Calculated MW:

380 aa, 44 kDa

Observed MW:

40-46 kDa

Purification Method:

Antigen affinity purification

Recommended Dilutions:

WB 1:500-1:1000

Applications

Tested Applications:

WB, ELISA

Cited Applications:

WB

Species Specificity:

human, mouse, rat

Cited Species:

rat, mouse

Positive Controls:

WB : HEK-293 cells, HeLa cells, HepG2 cells

Background Information

MTRF1L, also named as Peptide chain release factor 1-like, mitochondrial, is a 380 amino acid protein, which belongs to the prokaryotic/mitochondrial release factor family and locates in the mitochondrial. MTRF1L directs the termination of translation in response to the peptide chain termination codons UAA and UAG. MTRF1L is expressed in skeletal muscle.

Notable Publications

| Author | Pubmed ID | Journal | Application |
|-----------------|-----------|----------------------------|-------------|
| Takumi Yokokawa | 32446358 | Biochem Biophys Res Commun | WB |
| Zhiyuan Tian | 38677116 | J Hazard Mater | WB |
| Dongjie Li | 36690096 | Sci Total Environ | WB |

Storage

Storage:

Store at -20°C. Stable for one year after shipment.

Storage Buffer:

PBS with 0.02% sodium azide and 50% glycerol pH 7.3.

Aliquoting is unnecessary for -20°C storage

For technical support and original validation data for this product please contact:

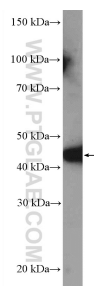
T: 4006900926

E: Proteintech-CN@ptglab.com

W: ptgcn.com

This product is exclusively available under Proteintech Group brand and is not available to purchase from any other manufacturer.

Selected Validation Data



HEK-293 cells were subjected to SDS PAGE followed by western blot with 16694-1-AP (MTRF1L Antibody) at dilution of 1:600 incubated at room temperature for 1.5 hours.