

For Research Use Only

KLHL14 Polyclonal antibody

Catalog Number: 16693-1-AP



Basic Information

Catalog Number: 16693-1-AP	GenBank Accession Number: BC021267	Purification Method: Antigen affinity purification
Size: 850 µg/ml	GeneID (NCBI): 57565	Recommended Dilutions: WB 1:1000-1:4000 IF 1:20-1:200
Source: Rabbit	UNIPROT ID: Q9P2G3	
Isotype: IgG	Full Name: kelch-like 14 (Drosophila)	
Immunogen Catalog Number: AG10065	Calculated MW: 44 kDa, 71 kDa	
	Observed MW: 35 kDa, 70 kDa	

Applications

Tested Applications: IF/ICC, WB, ELISA	Positive Controls: WB : PC-3 cells, HepG2 cells, MCF-7 cells IF : HepG2 cells,
Species Specificity: human, mouse, rat	

Background Information

Kelch-like protein 14 (KLHL14) is a member of the KLHL family. The kelch motif was initially discovered in Kelch. In this protein there are six copies of the motif. It has been shown for one member that it is related to Galactose Oxidase for which a structure has been solved. Two isoforms of this protein exist - 70kDa and 43kDa.

Storage

Storage:
Store at -20°C. Stable for one year after shipment.
Storage Buffer:
PBS with 0.02% sodium azide and 50% glycerol pH 7.3.
Aliquoting is unnecessary for -20°C storage

For technical support and original validation data for this product please contact:

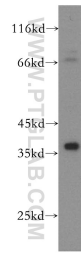
T: 4006900926

E: Proteintech-CN@ptglab.com

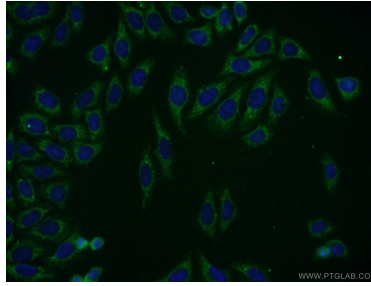
W: ptgcn.com

This product is exclusively available under Proteintech Group brand and is not available to purchase from any other manufacturer.

Selected Validation Data



PC-3 cells were subjected to SDS PAGE followed by western blot with 16693-1-AP (KLHL14 antibody) at dilution of 1:1000 incubated at room temperature for 1.5 hours.



Immunofluorescent analysis of (-20°C Ethanol) fixed HepG2 cells using 16693-1-AP (KLHL14 antibody) at dilution of 1:50 and Alexa Fluor 488-conjugated AffiniPure Goat Anti-Rabbit IgG(H+L).