

For Research Use Only

PARP11 Polyclonal antibody, PBS Only

Catalog Number: 16692-1-PBS

Featured Product



Basic Information

Catalog Number:

16692-1-PBS

Source:

Rabbit

Isotype:

IgG

Immunogen Catalog Number:

AG10053

GenBank Accession Number:

BC017569

GeneID (NCBI):

57097

UNIPROT ID:

Q9NR21

Full Name:

poly (ADP-ribose) polymerase family, member 11

Calculated MW:

331 aa, 39 kDa

Observed MW:

30 kDa

Purification Method:

Antigen affinity purification

Applications

Tested Applications:

WB, Indirect ELISA

Species Specificity:

human, mouse

Background Information

PARP11, also named as ARTD11, belongs to the ARTD/PARP family. PARP11 is a mono-ADP-ribosyltransferase that mediates mono-ADP-ribosylation of target proteins. PARP11 plays a role in nuclear envelope stability and nuclear remodeling during spermiogenesis (PMID: 25043379). PARP11 has 4 isoforms with the molecular mass of 28-40 kDa.

Storage

Storage:

Store at -80°C.

The product is shipped with ice packs. Upon receipt, store it immediately at -80°C

Storage Buffer:

PBS only, pH7.3

For technical support and original validation data for this product please contact:

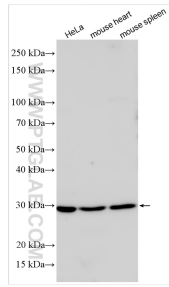
T: 4006900926

E: Proteintech-CN@ptglab.com

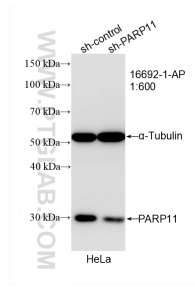
W: ptgcn.com

This product is exclusively available under Proteintech Group brand and is not available to purchase from any other manufacturer.

Selected Validation Data



Various lysates were subjected to SDS PAGE followed by western blot with 16692-1-AP (PARP11 antibody) at dilution of 1:1000 incubated at room temperature for 1.5 hours. This data was developed using the same antibody clone with 16692-1-PBS in a different storage buffer formulation.



WB result of PARP11 antibody (16692-1-AP; 1:600; incubated at room temperature for 1.5 hours) with sh-Control and sh-PARP11 transfected HeLa cells. This data was developed using the same antibody clone with 16692-1-PBS in a different storage buffer formulation.