

For Research Use Only

ATL2 Polyclonal antibody

Catalog Number: 16688-1-AP

Featured Product

6 Publications



Basic Information

Catalog Number:

16688-1-AP

Size:

350 µg/ml

Source:

Rabbit

Isotype:

IgG

Immunogen Catalog Number:

AG10030

GenBank Accession Number:

BC053508

GeneID (NCBI):

64225

UNIPROT ID:

Q8NHH9

Full Name:

atlastin GTPase 2

Calculated MW:

412aa, 47 kDa; 583aa, 66 kDa

Observed MW:

66 kDa

Purification Method:

Antigen affinity purification

Recommended Dilutions:

WB 1:500-1:2400

Applications

Tested Applications:

WB, ELISA

Cited Applications:

WB, IF

Species Specificity:

human

Cited Species:

human, monkey, mouse

Positive Controls:

WB : HEK-293 cells, Jurkat cells, HeLa cells, HepG2 cells

Background Information

Notable Publications

Author	Pubmed ID	Journal	Application
Nan Liu	33988678	J Cell Biol	IF
Toshiaki Sakisaka	35894092	J Biochem	WB,IF
Qingzhou Chen	30773365	Curr Biol	WB

Storage

Storage:

Store at -20°C. Stable for one year after shipment.

Storage Buffer:

PBS with 0.02% sodium azide and 50% glycerol pH 7.3.

Aliquoting is unnecessary for -20°C storage

For technical support and original validation data for this product please contact:

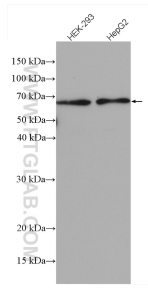
T: 4006900926

E: Proteintech-CN@ptglab.com

W: ptgcn.com

This product is exclusively available under Proteintech Group brand and is not available to purchase from any other manufacturer.

Selected Validation Data



Various lysates were subjected to SDS PAGE followed by western blot with 16688-1-AP (ATL2 antibody) at dilution of 1:1500 incubated at room temperature for 1.5 hours.