

For Research Use Only

GTDC1 Polyclonal antibody

Catalog Number: 16666-1-AP **1 Publications**



Basic Information

Catalog Number: 16666-1-AP	GenBank Accession Number: BC061699	Purification Method: Antigen affinity purification
Size: 350 µg/ml	GeneID (NCBI): 79712	Recommended Dilutions: IHC 1:50-1:500 IF 1:200-1:800
Source: Rabbit	UNIPROT ID: Q4AE62	
Isotype: IgG	Full Name: glycosyltransferase-like domain containing 1	
Immunogen Catalog Number: AG10145	Calculated MW: 292 aa, 34 kDa, 53 kDa	

Applications

Tested Applications: IF/ICC, IHC, ELISA	Positive Controls:
Cited Applications: WB	IHC: human liver tissue, human kidney tissue, human ovary tissue, human spleen tissue, human testis tissue, mouse testis tissue
Species Specificity: human, mouse	IF: HepG2 cells,
Note-IHC: suggested antigen retrieval with TE buffer pH 9.0; (*) Alternatively, antigen retrieval may be performed with citrate buffer pH 6.0	

Background Information

Notable Publications

Author	Pubmed ID	Journal	Application
Eric Kenney	32704134	Sci Rep	WB

Storage

Storage:
Store at -20°C. Stable for one year after shipment.

Storage Buffer:
PBS with 0.02% sodium azide and 50% glycerol pH 7.3.

Aliquoting is unnecessary for -20°C storage

For technical support and original validation data for this product please contact:

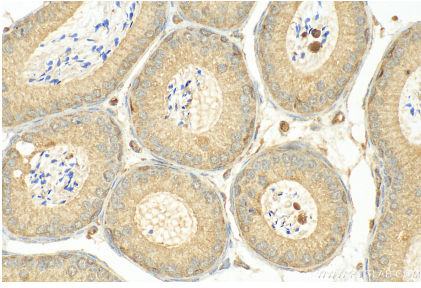
T: 4006900926

E: Proteintech-CN@ptglab.com

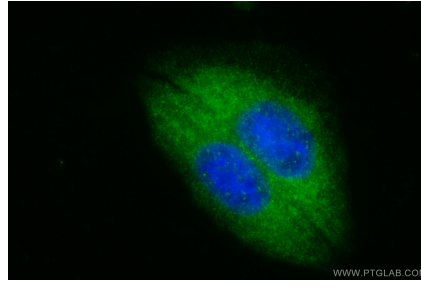
W: ptgcn.com

This product is exclusively available under Proteintech Group brand and is not available to purchase from any other manufacturer.

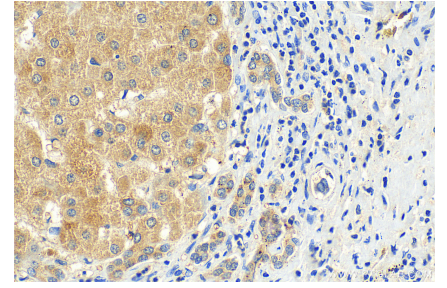
Selected Validation Data



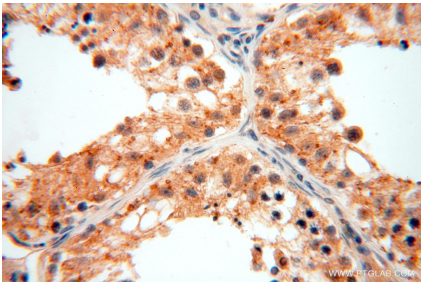
Immunohistochemical analysis of paraffin-embedded mouse testis tissue slide using 16666-1-AP (GTDC1 antibody) at dilution of 1:200 (under 40x lens).



Immunofluorescent analysis of (-20°C Ethanol) fixed HepG2 cells using GTDC1 antibody (16666-1-AP) at dilution of 1:400 and CoraLite® 488-Conjugated AffiniPure Goat Anti-Rabbit IgG(H+L) (SA00013-2).



Immunohistochemical analysis of paraffin-embedded human liver tissue slide using 16666-1-AP (GTDC1 antibody) at dilution of 1:200 (under 40x lens). Heat mediated antigen retrieval with Tris-EDTA buffer(pH9).



Immunohistochemical analysis of paraffin-embedded human testis using 16666-1-AP (GTDC1 antibody) at dilution of 1:100 (under 40x lens).