

For Research Use Only

# PPA2 Polyclonal antibody

Catalog Number: 16662-1-AP

1 Publications



## Basic Information

Catalog Number:

16662-1-AP

Size:

700 µg/ml

Source:

Rabbit

Isotype:

IgG

Immunogen Catalog Number:

AG10138

GenBank Accession Number:

BC057219

GeneID (NCBI):

27068

UNIPROT ID:

Q9H2U2

Full Name:

pyrophosphatase (inorganic) 2

Calculated MW:

305aa, 35 kDa; 334aa, 38 kDa

Observed MW:

32-40 kDa

Purification Method:

Antigen affinity purification

Recommended Dilutions:

WB 1:500-1:2000

IHC 1:50-1:500

## Applications

Tested Applications:

IHC, WB, ELISA

Cited Applications:

IHC

Species Specificity:

human, mouse, rat

Cited Species:

human

**Note-IHC: suggested antigen retrieval with TE buffer pH 9.0; (\*) Alternatively, antigen retrieval may be performed with citrate buffer pH 6.0**

Positive Controls:

WB : mouse heart tissue, mouse kidney tissue, mouse liver tissue, rat heart tissue

IHC : human liver cancer tissue, human lung cancer tissue

## Background Information

Pyrophosphatase 2 (PPA2) is a mitochondrial-located pyrophosphatase (PPase) that hydrolyzes inorganic pyrophosphate (PPi), generated by numerous nucleotide-dependent reactions, into two orthophosphate molecules (PMID: 34400813). PPA2 is a cardiomyopathy-associated protein, which has a greater physiological importance in mitochondrial function (PMID: 27523597).

## Notable Publications

Author	Pubmed ID	Journal	Application
Jia-Ning Zhang	39176095	Front Immunol	IHC

## Storage

Storage:

Store at -20°C. Stable for one year after shipment.

Storage Buffer:

PBS with 0.02% sodium azide and 50% glycerol pH 7.3.

Aliquoting is unnecessary for -20°C storage

For technical support and original validation data for this product please contact:

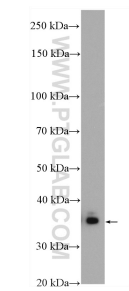
T: 4006900926

E: [Proteintech-CN@ptglab.com](mailto:Proteintech-CN@ptglab.com)

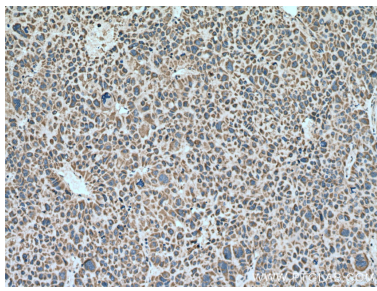
W: [ptgcn.com](http://ptgcn.com)

This product is exclusively available under Proteintech Group brand and is not available to purchase from any other manufacturer.

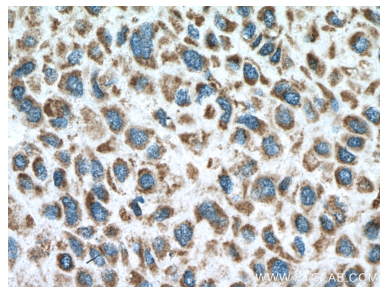
Selected Validation Data



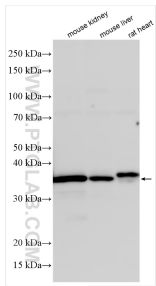
mouse heart tissue were subjected to SDS PAGE followed by western blot with 16662-1-AP (PPA2 antibody) at dilution of 1:1000 incubated at room temperature for 1.5 hours.



Immunohistochemical analysis of paraffin-embedded human liver cancer tissue slide using 16662-1-AP (PPA2 antibody) at dilution of 1:200 (under 10x lens). Heat mediated antigen retrieval with Tris-EDTA buffer (pH 9.0).



Immunohistochemical analysis of paraffin-embedded human liver cancer tissue slide using 16662-1-AP (PPA2 antibody) at dilution of 1:200 (under 40x lens). Heat mediated antigen retrieval with Tris-EDTA buffer (pH 9.0).



Various lysates were subjected to SDS PAGE followed by western blot with 16662-1-AP (PPA2 antibody) at dilution of 1:3000 incubated at room temperature for 1.5 hours.