

For Research Use Only

SPATA19 Polyclonal antibody

Catalog Number: 16656-1-AP **2 Publications**



Basic Information

Catalog Number: 16656-1-AP	GenBank Accession Number: BC058039	Purification Method: Antigen affinity purification
Size: 700 µg/ml	GeneID (NCBI): 219938	Recommended Dilutions: WB 1:500-1:2000 IHC 1:20-1:200 IF 1:50-1:500
Source: Rabbit	UNIPROT ID: Q7Z5L4	
Isotype: IgG	Full Name: spermatogenesis associated 19	
Immunogen Catalog Number: AG10108	Calculated MW: 167 aa, 19 kDa	
	Observed MW: 19 kDa	

Applications

Tested Applications: IF-P, IHC, WB, ELISA	Positive Controls: WB : human testis tissue, mouse testis tissue, rat testis tissue IHC : human testis tissue, human liver tissue, human lung tissue, human ovary tissue, human placenta tissue, human skin tissue, human spleen tissue IF : mouse testis tissue,
Cited Applications: WB, IF	
Species Specificity: human, mouse, rat	
Cited Species: mouse	

Note-IHC: suggested antigen retrieval with TE buffer pH 9.0; (*) Alternatively, antigen retrieval may be performed with citrate buffer pH 6.0

Background Information

Notable Publications

Author	Pubmed ID	Journal	Application
Xiaoli Wang	33674260	Development	WB,IF
	34437685	Development	WB,IF

Storage

Storage:
Store at -20°C. Stable for one year after shipment.
Storage Buffer:
PBS with 0.02% sodium azide and 50% glycerol pH 7.3.
Aliquoting is unnecessary for -20°C storage

For technical support and original validation data for this product please contact:

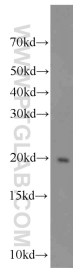
T: 4006900926

E: Proteintech-CN@ptglab.com

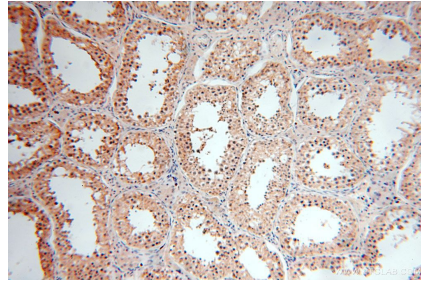
W: ptgcn.com

This product is exclusively available under Proteintech Group brand and is not available to purchase from any other manufacturer.

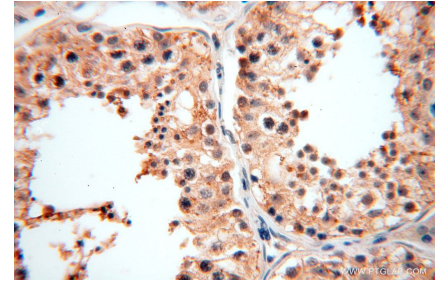
Selected Validation Data



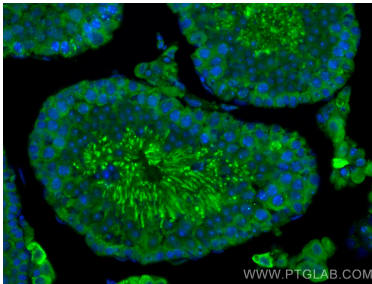
human testis tissue were subjected to SDS PAGE followed by western blot with 16656-1-AP (SPATA19 antibody) at dilution of 1:1000 incubated at room temperature for 1.5 hours.



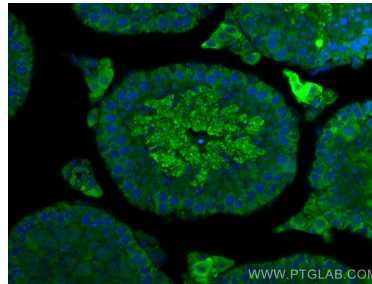
Immunohistochemical analysis of paraffin-embedded human testis using 16656-1-AP (SPATA19 antibody) at dilution of 1:100 (under 10x lens).



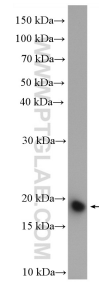
Immunohistochemical analysis of paraffin-embedded human testis using 16656-1-AP (SPATA19 antibody) at dilution of 1:100 (under 40x lens).



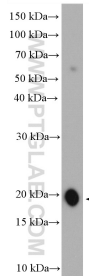
Immunofluorescent analysis of (4% PFA) fixed mouse testis tissue using SPATA19 antibody (16656-1-AP) at dilution of 1:200 and CoraLite®488-Conjugated AffiniPure Goat Anti-Rabbit IgG(H+L).



Immunofluorescent analysis of (4% PFA) fixed mouse testis tissue using SPATA19 antibody (16656-1-AP) at dilution of 1:200 and CoraLite®488-Conjugated AffiniPure Goat Anti-Rabbit IgG(H+L).



mouse testis tissue were subjected to SDS PAGE followed by western blot with 16656-1-AP (SPATA19 antibody) at dilution of 1:1500 incubated at room temperature for 1.5 hours.



rat testis tissue were subjected to SDS PAGE followed by western blot with 16656-1-AP (SPATA19 antibody) at dilution of 1:1500 incubated at room temperature for 1.5 hours.