

For Research Use Only

MRPL10 Polyclonal antibody

Catalog Number: 16652-1-AP

Featured Product

2 Publications



Basic Information

Catalog Number:

16652-1-AP

Size:

400 ug/ml

Source:

Rabbit

Isotype:

IgG

Immunogen Catalog Number:

AG10087

GenBank Accession Number:

BC052601

GeneID (NCBI):

124995

UNIPROT ID:

Q7Z7H8

Full Name:

mitochondrial ribosomal protein L10

Calculated MW:

261 aa, 29 kDa

Observed MW:

29 kDa

Purification Method:

Antigen affinity purification

Recommended Dilutions:

WB 1:500-1:1000

IP 0.5-4.0 ug for 1.0-3.0 mg of total protein lysate

IHC 1:20-1:200

IF/ICC 1:50-1:500

Applications

Tested Applications:

WB, IHC, IF/ICC, IP, ELISA

Cited Applications:

WB

Species Specificity:

human, mouse, rat

Cited Species:

human

Note-IHC: suggested antigen retrieval with TE buffer pH 9.0; (*) Alternatively, antigen retrieval may be performed with citrate buffer pH 6.0

Positive Controls:

WB : HEK-293 cells, HeLa cells, HEK-293 mitochondrial

IP : mouse liver tissue,

IHC : human testis tissue,

IF/ICC : HepG2 cells,

Background Information

Notable Publications

Author	Pubmed ID	Journal	Application
Luis Daniel Cruz-Zaragoza	34672953	Cell	WB
Magdalena Shumanska	39623165	EMBO Rep	WB

Storage

Storage:

Store at -20°C. Stable for one year after shipment.

Storage Buffer:

PBS with 0.02% sodium azide and 50% glycerol pH 7.3.

Aliquoting is unnecessary for -20°C storage

For technical support and original validation data for this product please contact:

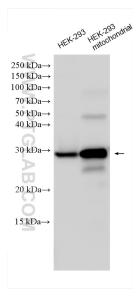
T: 4006900926

E: Proteintech-CN@ptglab.com

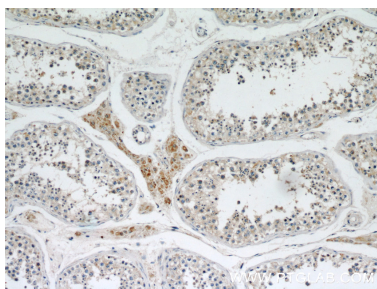
W: ptgcn.com

This product is exclusively available under Proteintech Group brand and is not available to purchase from any other manufacturer.

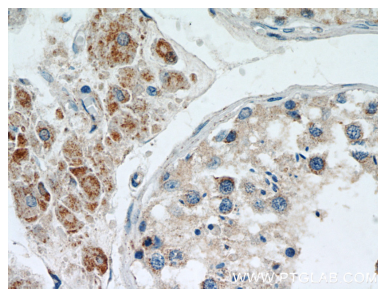
Selected Validation Data



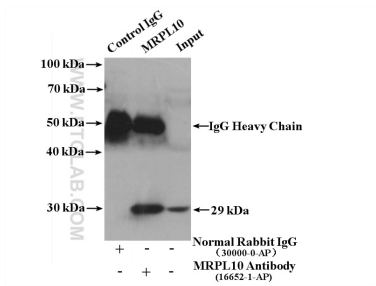
Various lysates were subjected to SDS PAGE followed by western blot with 16652-1-AP (MRPL10 antibody) at dilution of 1:500 incubated at room temperature for 1.5 hours.



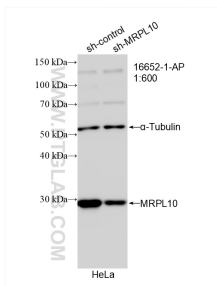
Immunohistochemical analysis of paraffin-embedded human testis using 16652-1-AP (MRPL10 antibody) at dilution of 1:50 (under 10x lens).



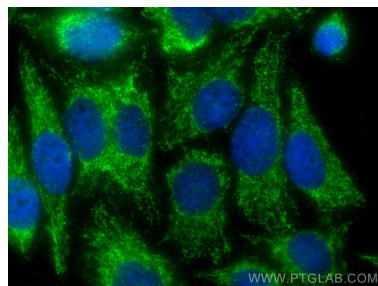
Immunohistochemical analysis of paraffin-embedded human testis using 16652-1-AP (MRPL10 antibody) at dilution of 1:50 (under 40x lens).



IP result of anti-MRPL10 (IP:16652-1-AP, 4ug; Detection:16652-1-AP 1:300) with mouse liver tissue lysate 6000 ug.



WB result of MRPL10 antibody (16652-1-AP; 1:600; incubated at room temperature for 1.5 hours) with sh-Control and sh-MRPL10 transfected HeLa cells.



Immunofluorescent analysis of (-20°C Ethanol) fixed HepG2 cells using MRPL10 antibody (16652-1-AP) at dilution of 1:200 and CoraLite®488-Conjugated AffiniPure Goat Anti-Rabbit IgG(H+L).